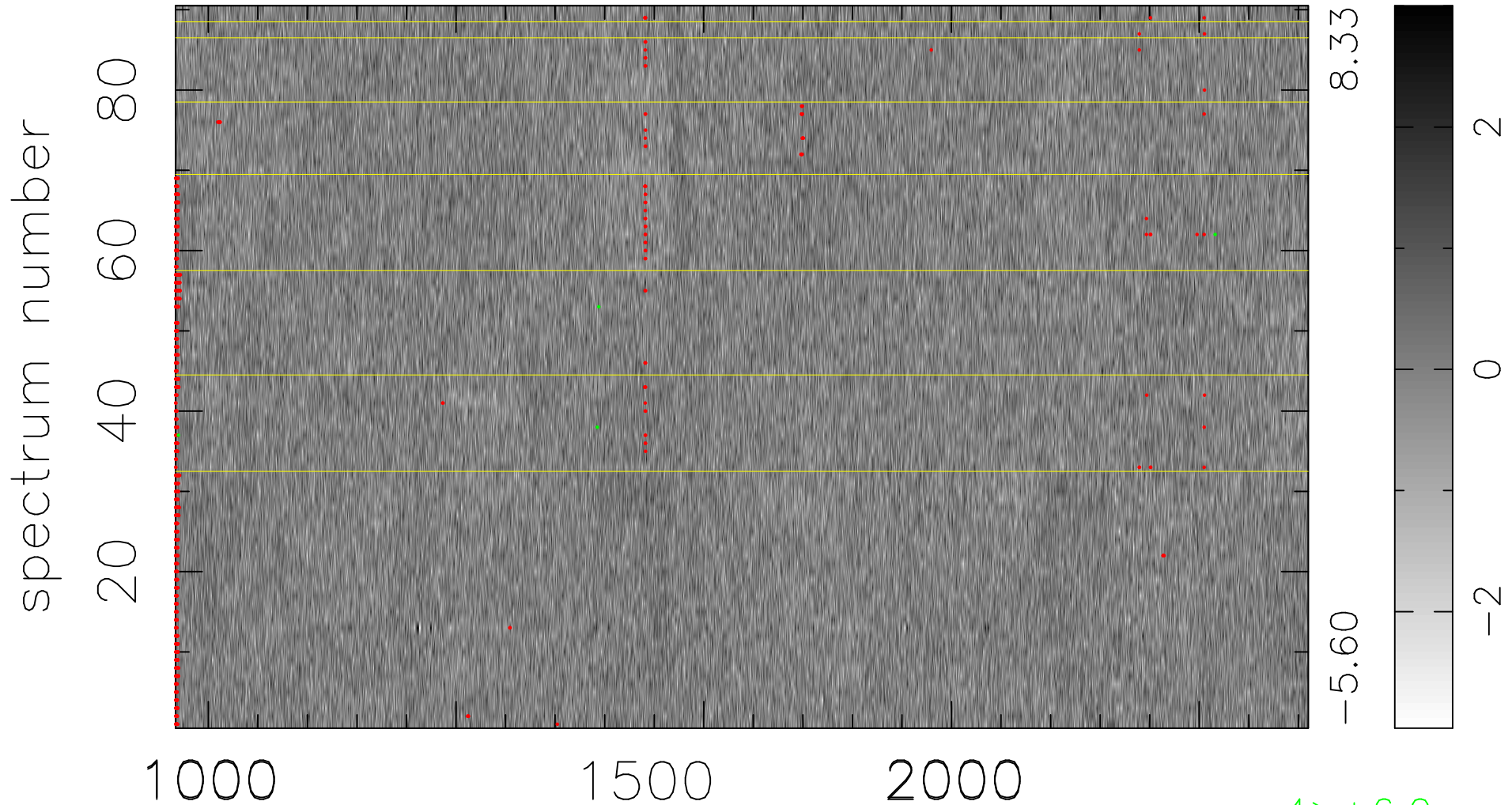


$$\chi(\lambda, t) = (\text{Data} - \text{Model } \text{AC}_5\text{B}_6\text{F}) / \sigma \chi$$

$$\chi^2 / (411570 - 5404) = 0.961 \Rightarrow 1.007$$

4573x90



bad:795=0.19%

λ (Å) $z = 2.71609$

4 > +6.0 σ