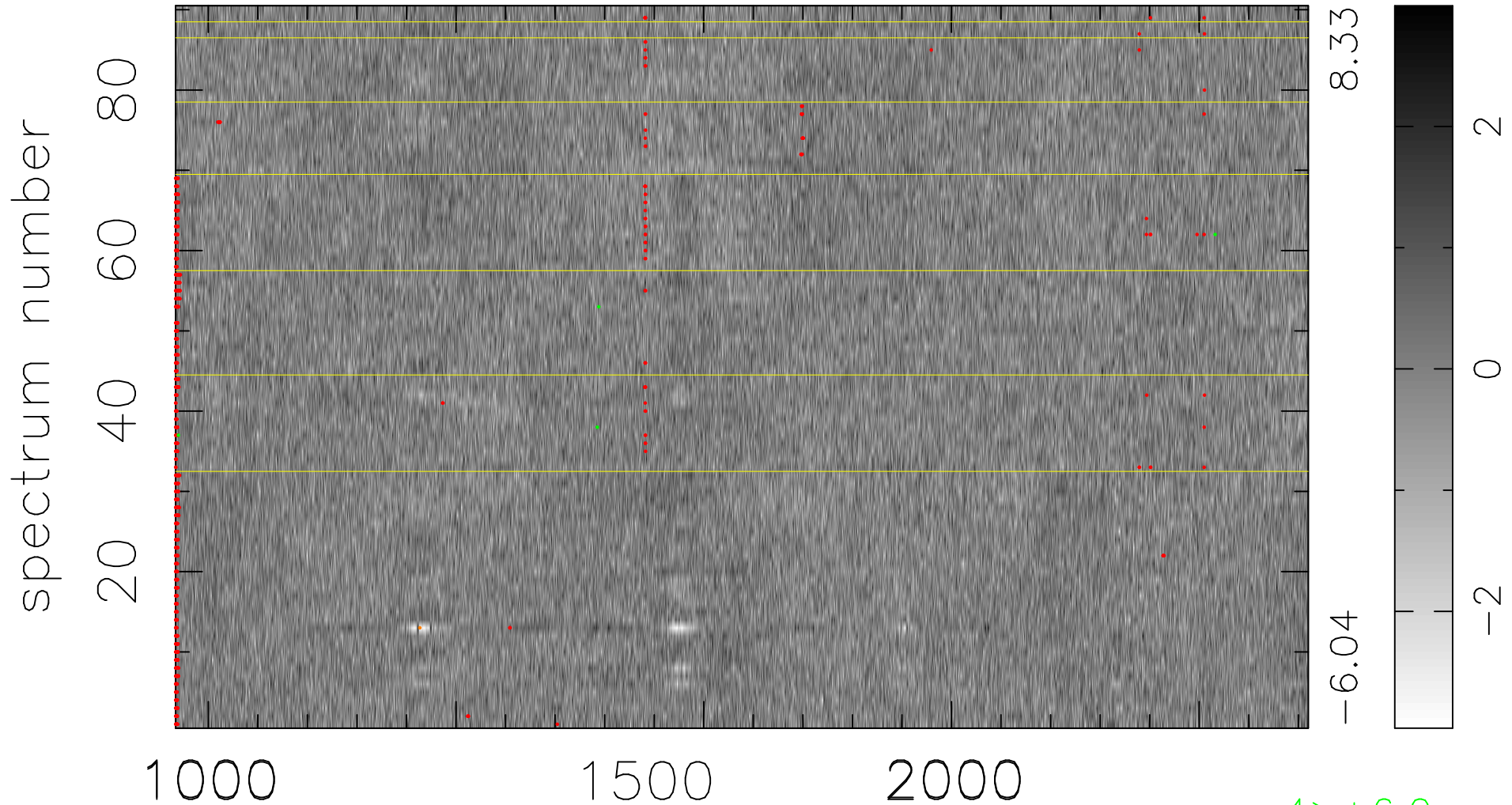


$$\chi(\lambda, t) = ( \text{Data} - \text{Model } AC_5 ) / \sigma \chi$$

$$\chi^2 / (411570 - 5148) = 0.974 \Rightarrow 1.007$$

4573x90



bad:795=0.19%

$\lambda$  (Å)  $z = 2.71609$

4 > +6.0σ

1 < -6.0σ