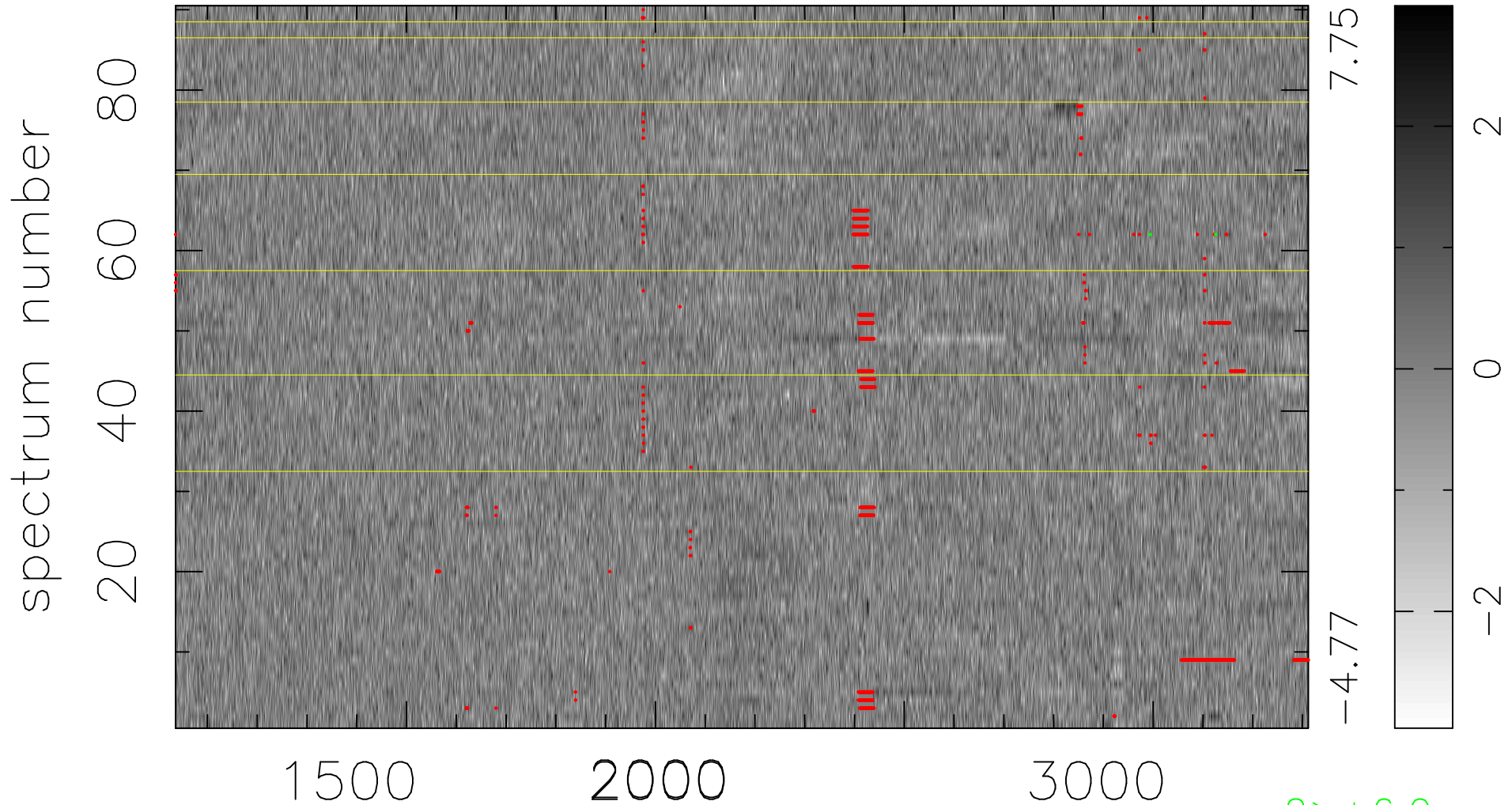


$$\chi(\lambda, t) = ( \text{Data} - \text{Model } \text{AC}_5\text{B}_5\text{F} ) / \sigma \chi$$

$$\chi^2 / (409680 - 5324) = 0.905 \Rightarrow 1.007$$

4552x90



bad:1501=0.37%  $\lambda$  (Å)  $z = 1.82739$

2 > +6.0 $\sigma$