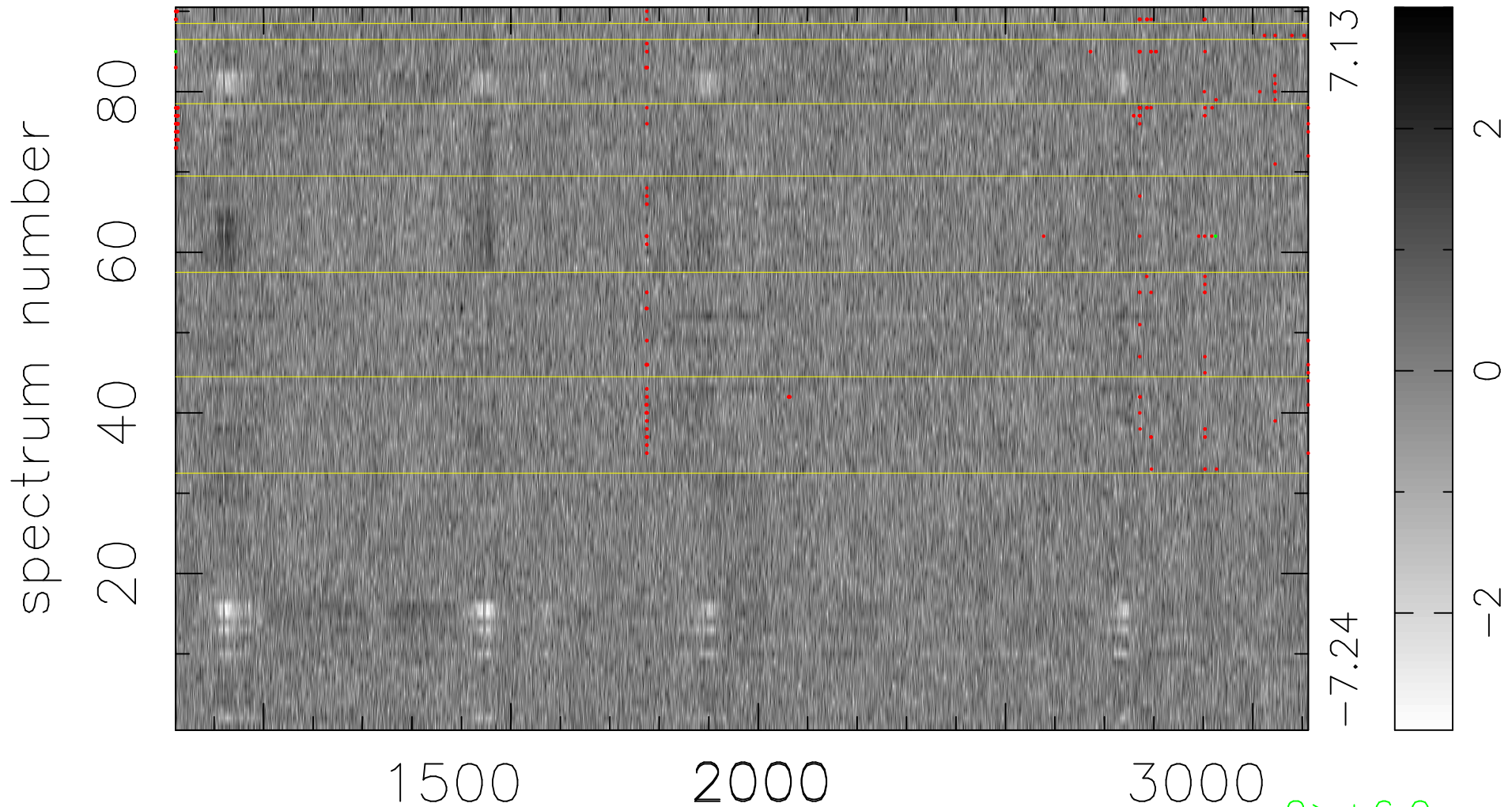


$$\chi(\lambda, t) = (\text{Data} - \text{Model AC}_5\text{F}) / \sigma \chi$$

$$\chi^2 / (412290 - 5346) = 0.934 \Rightarrow 1.007$$

4581 × 90



bad:239=0.058% λ (Å) $z = 2.10150$

2 > +6.0σ
1 < -6.0σ