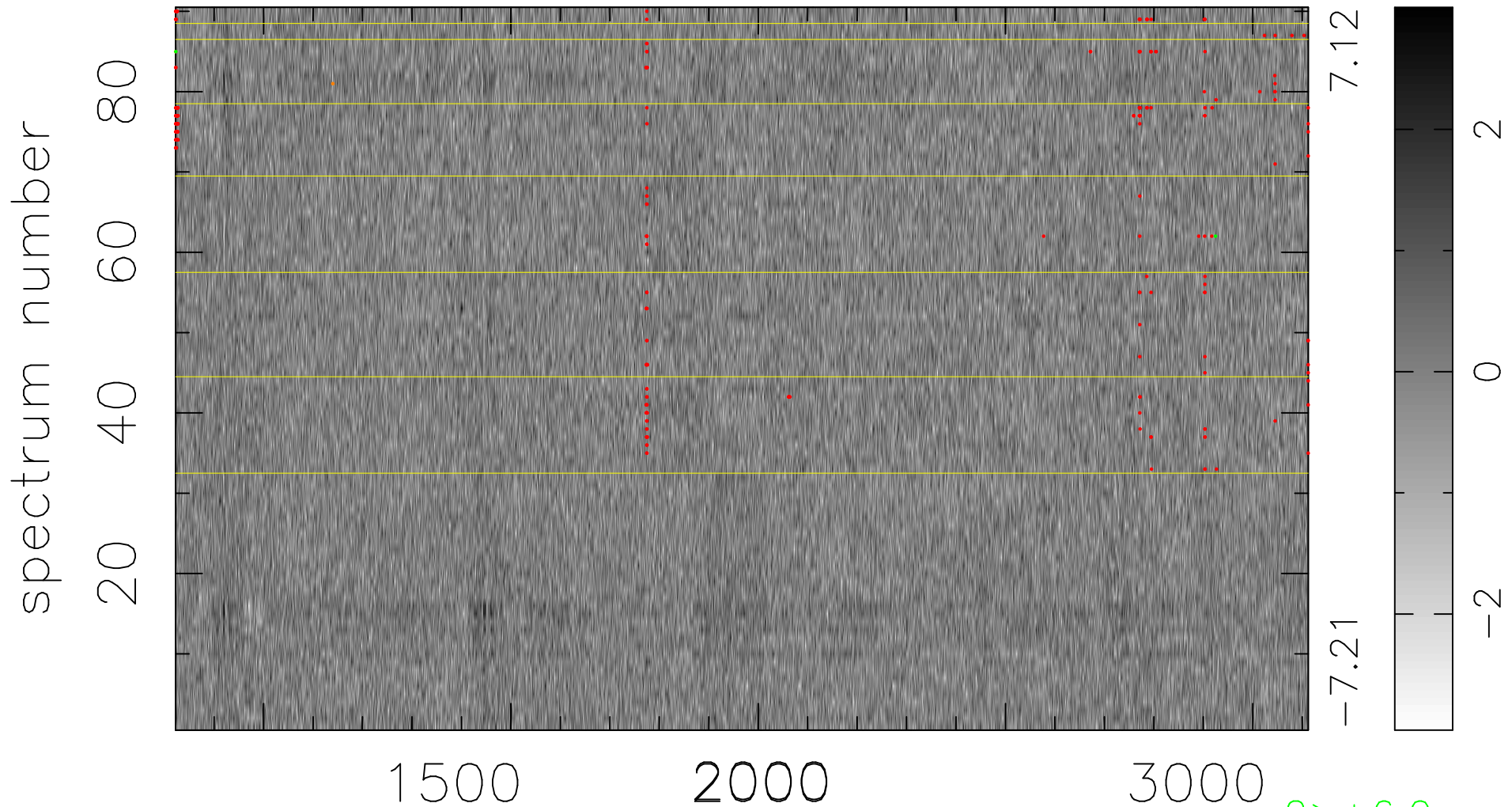


$$\chi(\lambda, t) = (\text{Data} - \text{Model } \text{AC}_5\text{B}_7\text{F}) / \sigma \chi$$

$$\chi^2 / (412290 - 5495) = 0.910 \Rightarrow 1.008$$

4581 × 90



7.12

-7.21

2

0

-2

2 > +6.0σ

2 < -6.0σ

bad:239=0.058% λ (Å) z = 2.10150