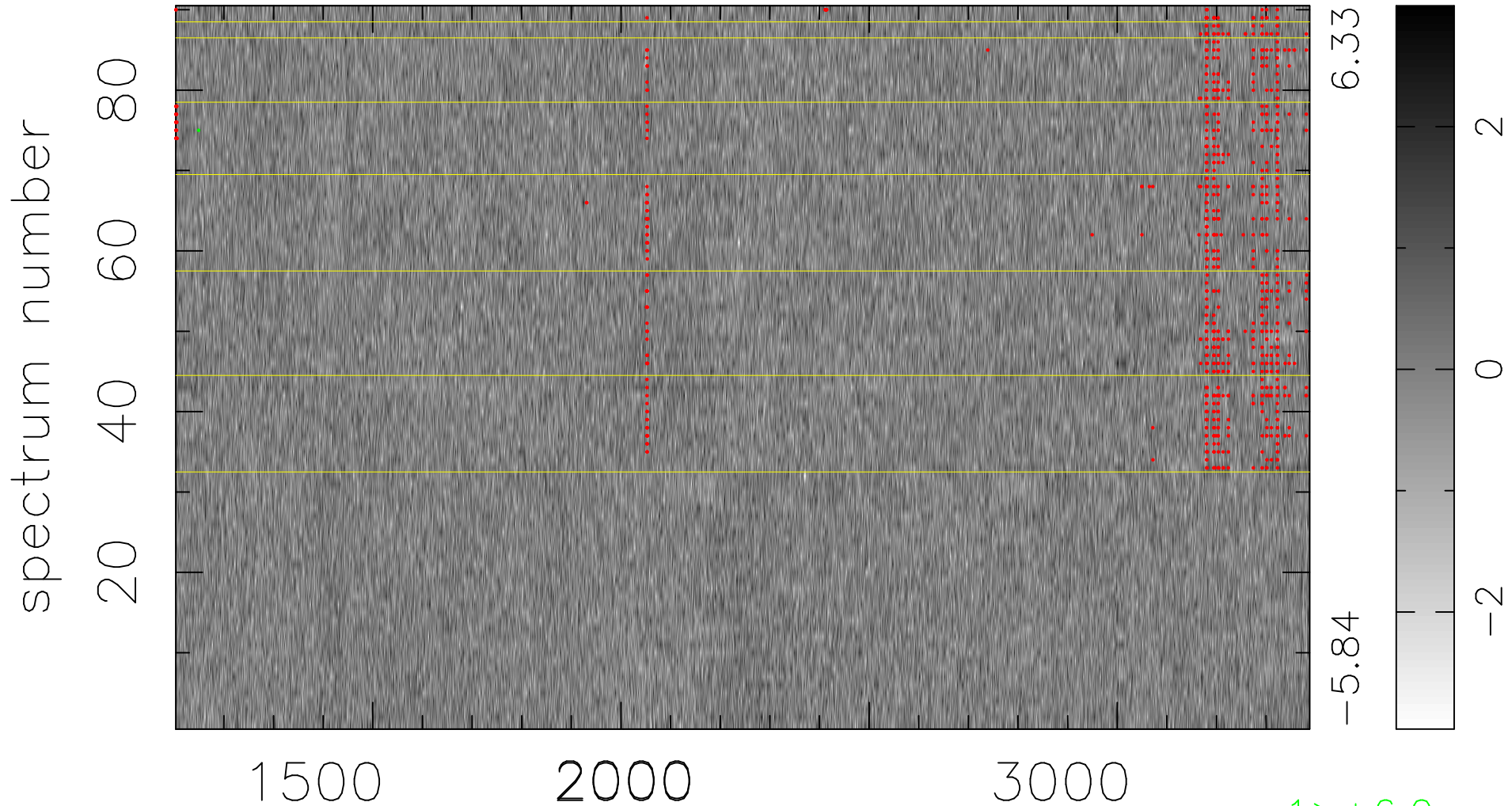


$$\chi(\lambda, t) = ( \text{Data} - \text{Model } \text{AC}_5\text{B}_5\text{F} ) / \sigma \chi$$

$$\chi^2 / (411300 - 5322) = 0.886 \Rightarrow 1.007$$

4570x90



bad:737=0.18%

$\lambda$  (Å)  $z = 1.72887$

1 > +6.0 $\sigma$