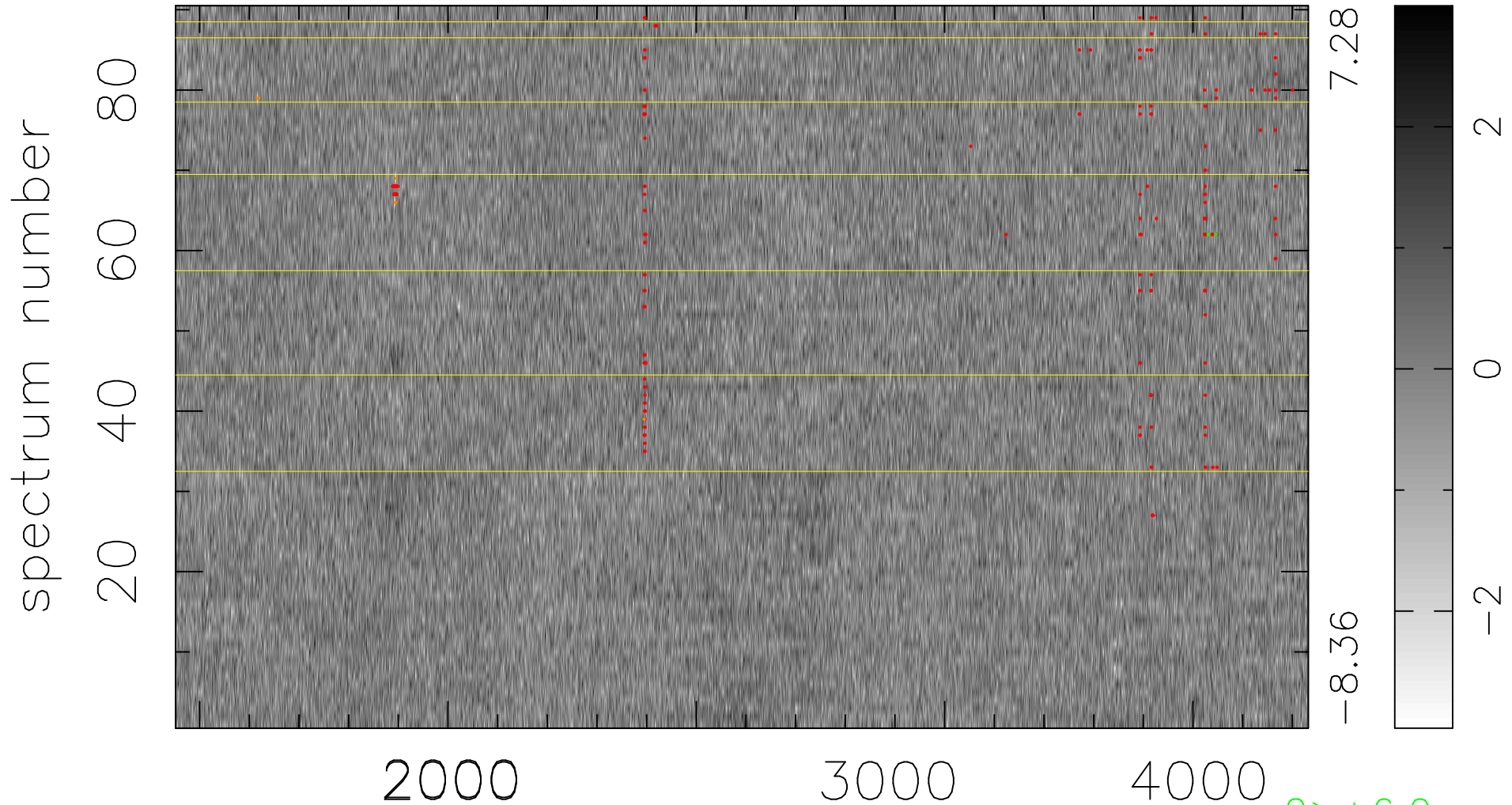


$$\chi(\lambda,t) = (\text{Data} - \text{Model } AC_5) / \sigma \chi$$

$$\chi^2 / (410580 - 4857) = 0.944 \Rightarrow 1.007$$

4562x90



bad:213=0.052% λ (Å) $z = 1.32966$

2 > +6.0 σ

8 < -6.0 σ