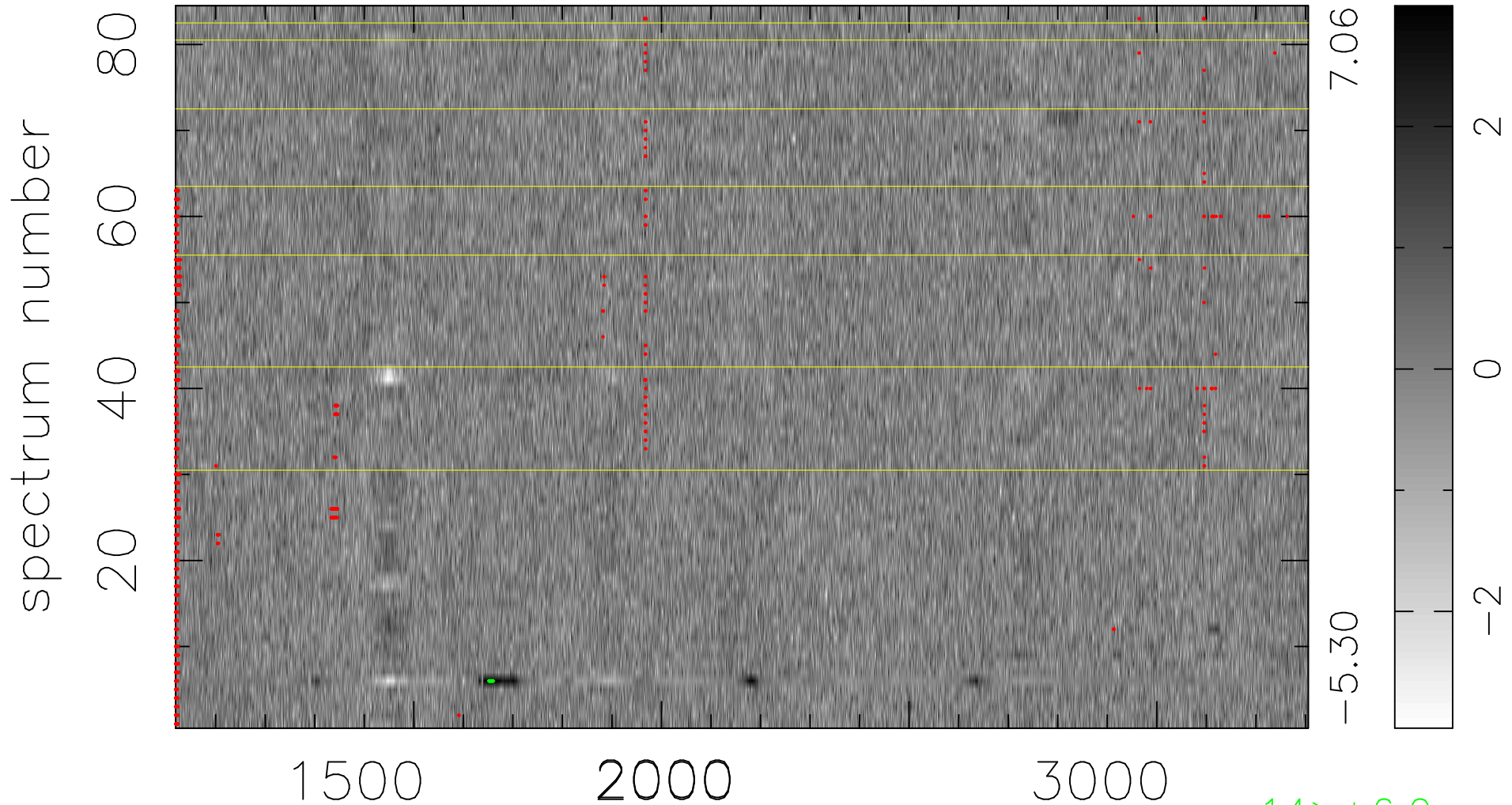


$$\chi(\lambda, t) = ( \text{Data} - \text{Model } AC_5 ) / \sigma \chi$$

$$\chi^2 / (384216 - 5032) = 0.991 \Rightarrow 1.008$$

4574x84



14 > +6.0σ

bad:886=0.23%

$\lambda$  (Å)  $z = 1.83768$