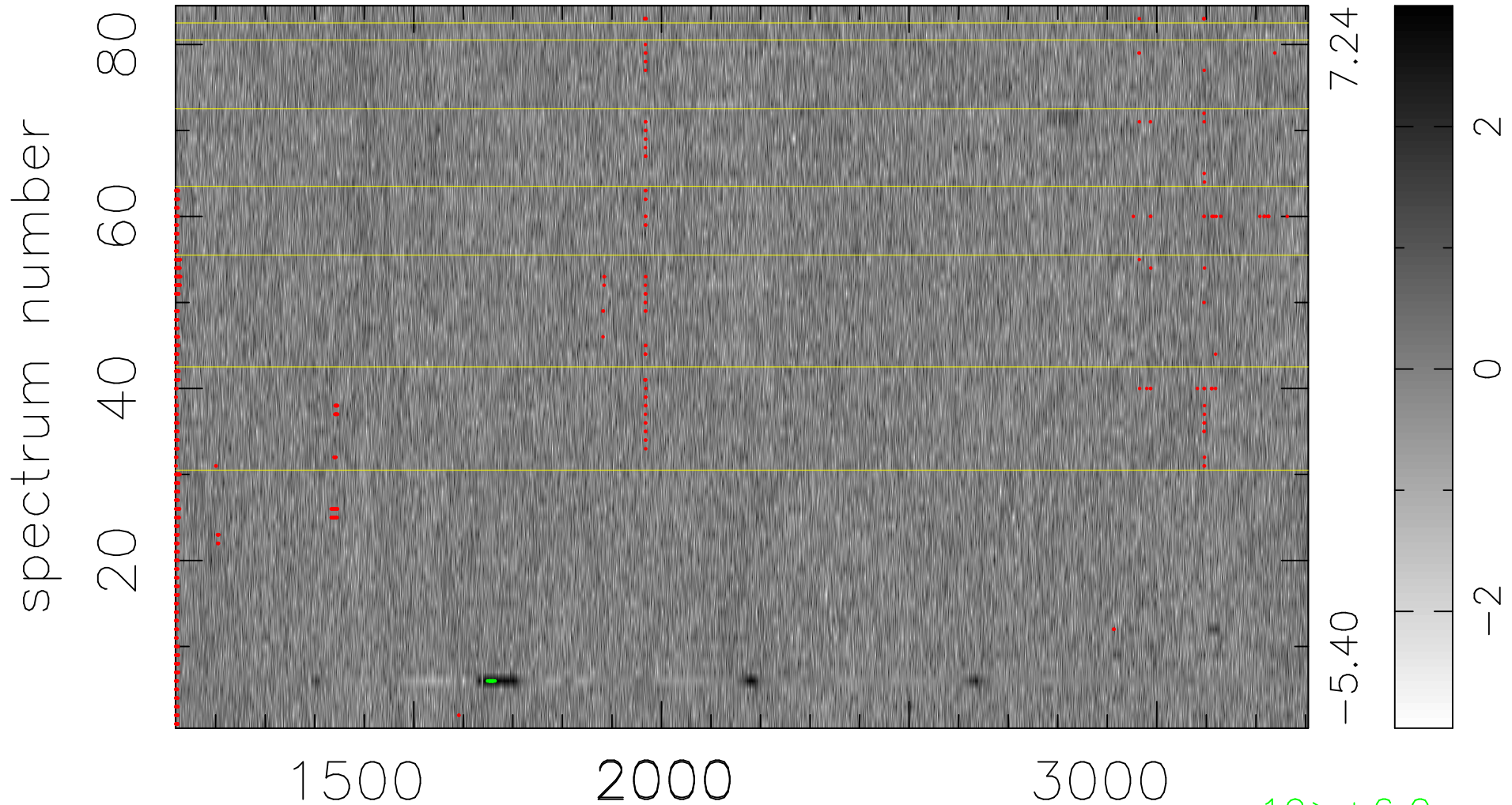


$$\chi(\lambda, t) = ( \text{Data} - \text{Model } \text{AC}_5\text{B}_5\text{F} ) / \sigma \chi$$

$$\chi^2 / (384216 - 5253) = 0.971 \Rightarrow 1.008$$

4574x84



19 > +6.0σ

bad:886=0.23%

$\lambda$  (Å)  $z = 1.83768$