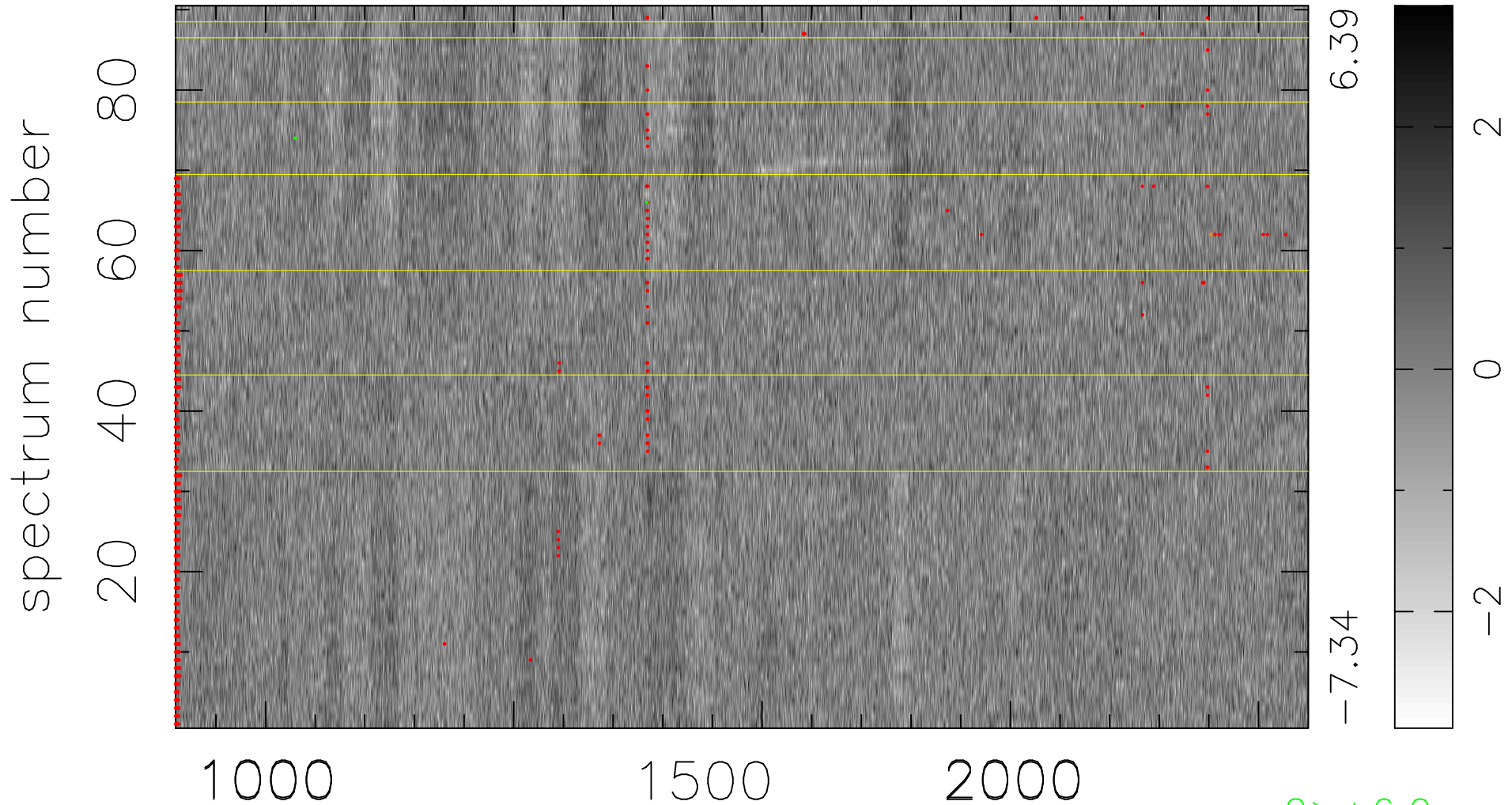


$$\chi(\lambda, t) = (\text{Data} - \text{Model } \text{AC}_5\text{B}_6\text{F}) / \sigma \chi$$

$$\chi^2 / (410670 - 5383) = 0.985 \Rightarrow 1.008$$

4563x90



bad:1071=0.26% λ (Å) $z = 2.91474$

2 > +6.0σ
1 < -6.0σ