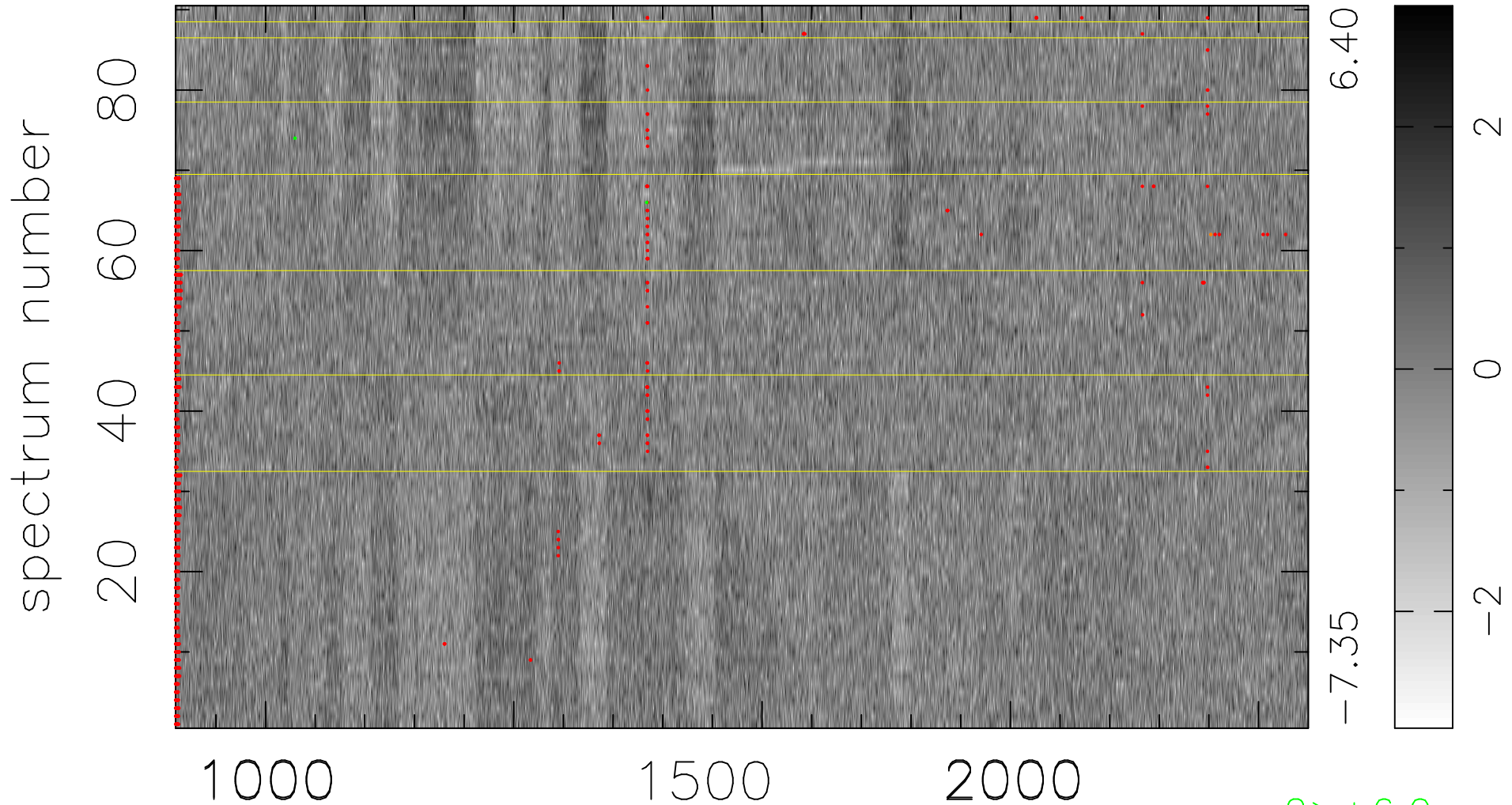


$$\chi(\lambda, t) = ( \text{Data} - \text{Model } AC_5 ) / \sigma \chi$$

$$\chi^2 / (410670 - 5139) = 0.994 \Rightarrow 1.007$$

4563x90



bad:1071=0.26%  $\lambda$  (Å)  $z = 2.91474$

2 > +6.0σ  
1 < -6.0σ