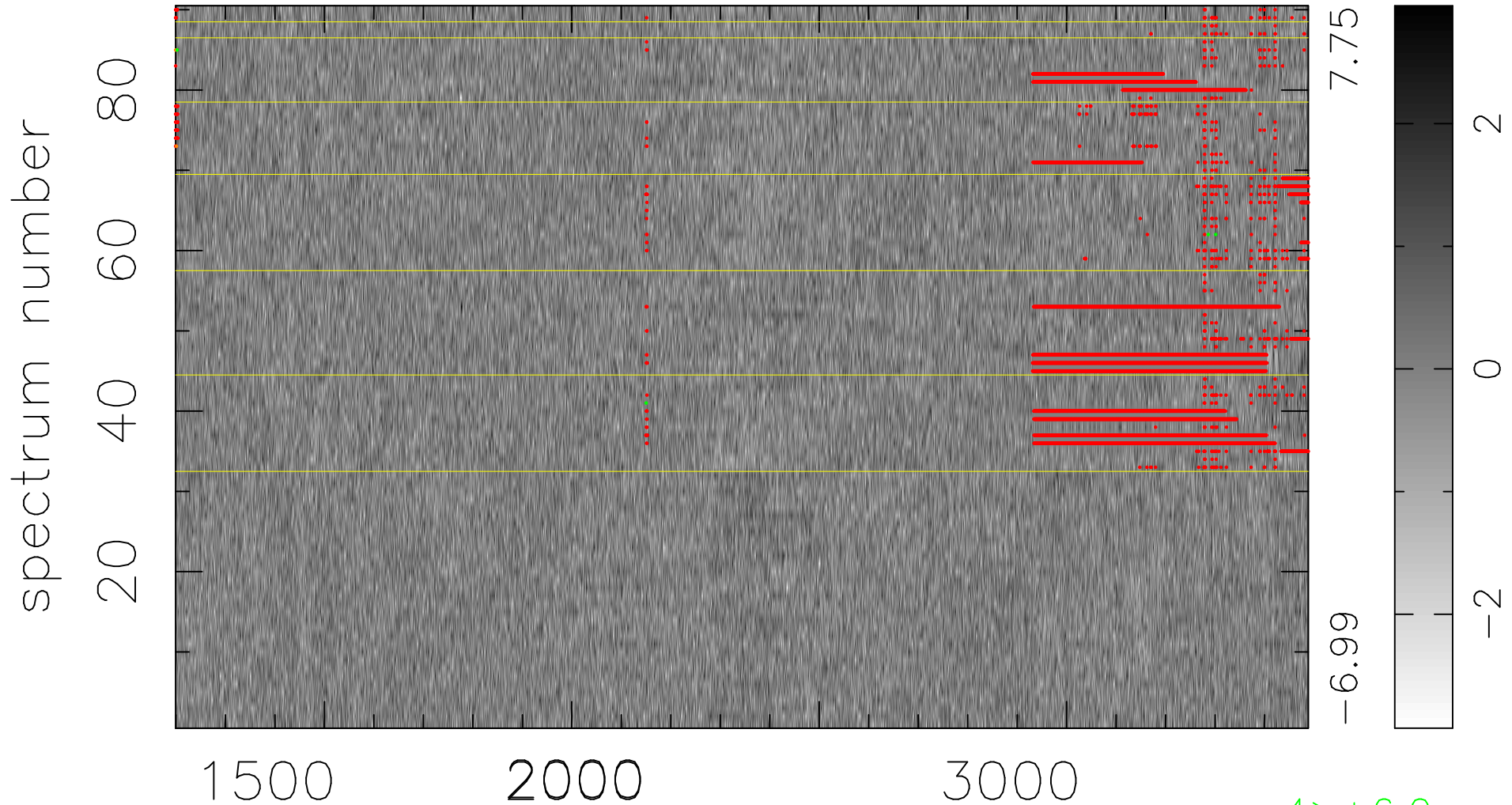


$$\chi(\lambda, t) = ( \text{Data} - \text{Model } \text{AC}_5\text{B}_5\text{F} ) / \sigma \chi$$

$$\chi^2 / (412110 - 5293) = 0.898 \Rightarrow 1.008$$

4579x90



bad:10753=2.6%  $\lambda$  (Å)  $z = 1.60762$

4 > +6.0 $\sigma$

2 < -6.0 $\sigma$