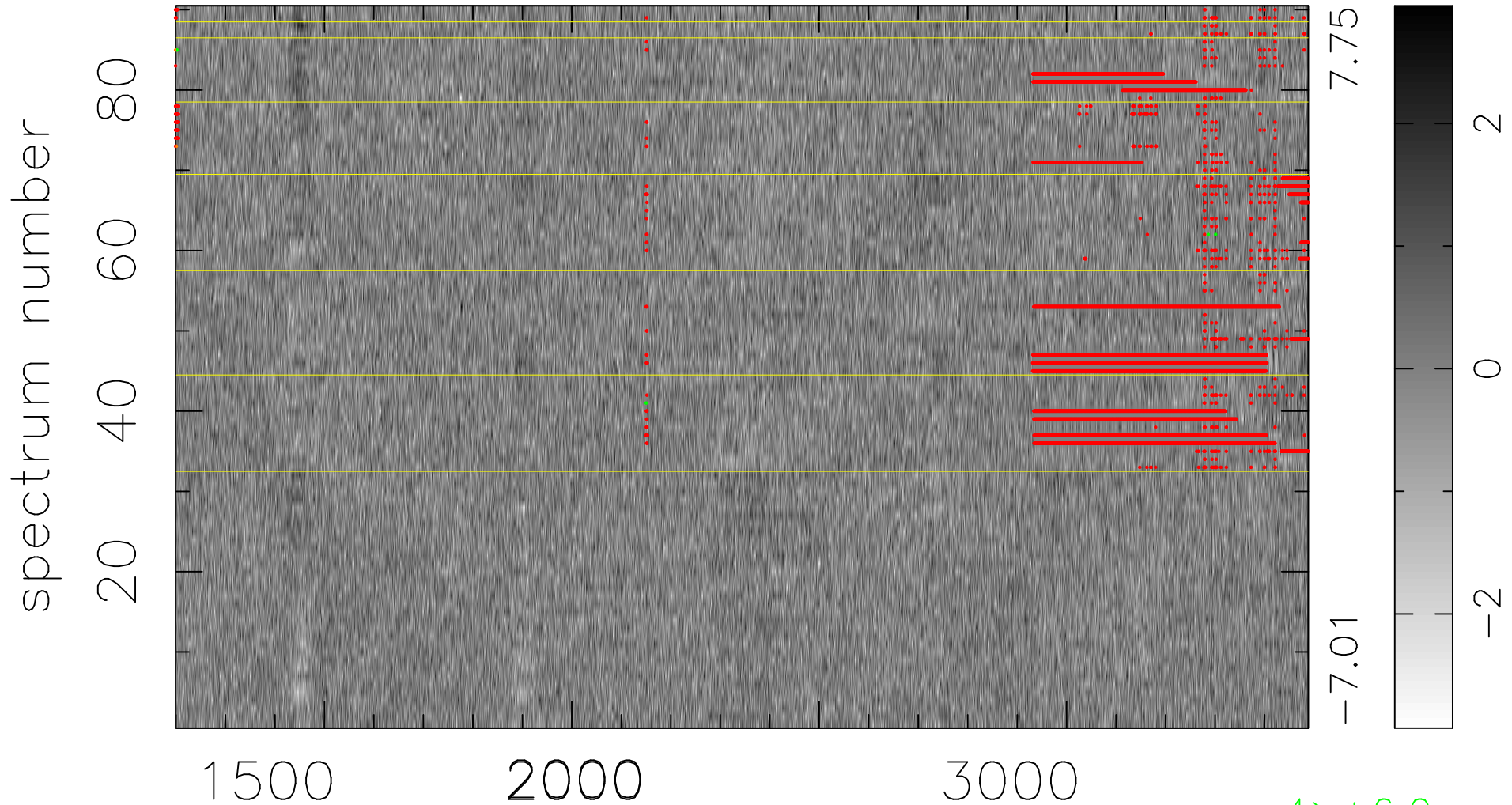


$$\chi(\lambda, t) = (\text{Data} - \text{Model AC}_5\text{F}) / \sigma \chi$$

$$\chi^2 / (412110 - 5149) = 0.905 \Rightarrow 1.007$$

4579x90



bad:10753=2.6% λ (Å) $z = 1.60762$

4 > +6.0 σ

2 < -6.0 σ