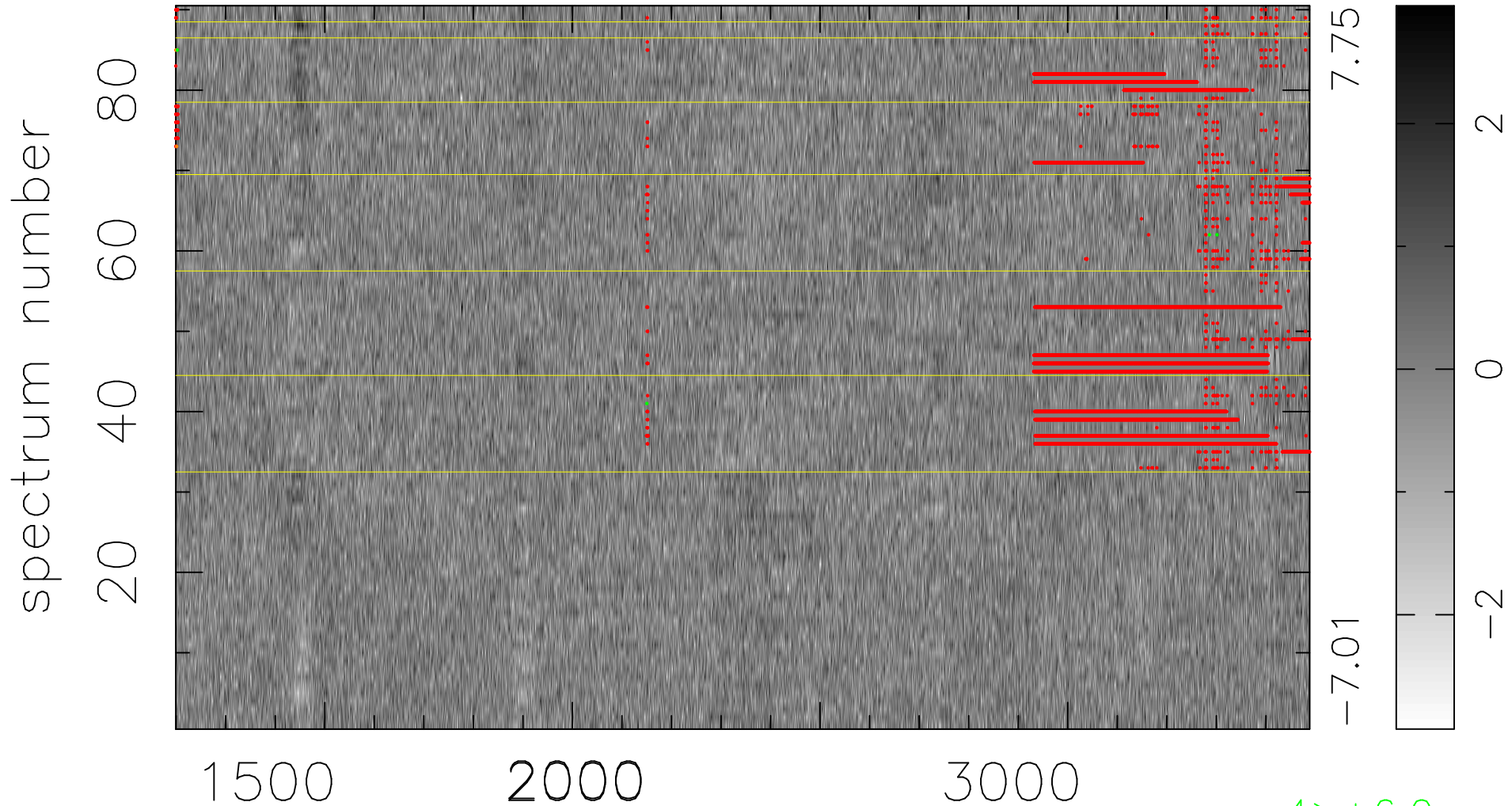


$$\chi(\lambda, t) = ( \text{Data} - \text{Model } AC_5 ) / \sigma \chi$$

$$\chi^2 / (412110 - 5059) = 0.905 \Rightarrow 1.007$$

4579 × 90



bad:10753=2.6%  $\lambda$  (Å)  $z = 1.60762$

4 > +6.0 $\sigma$

2 < -6.0 $\sigma$