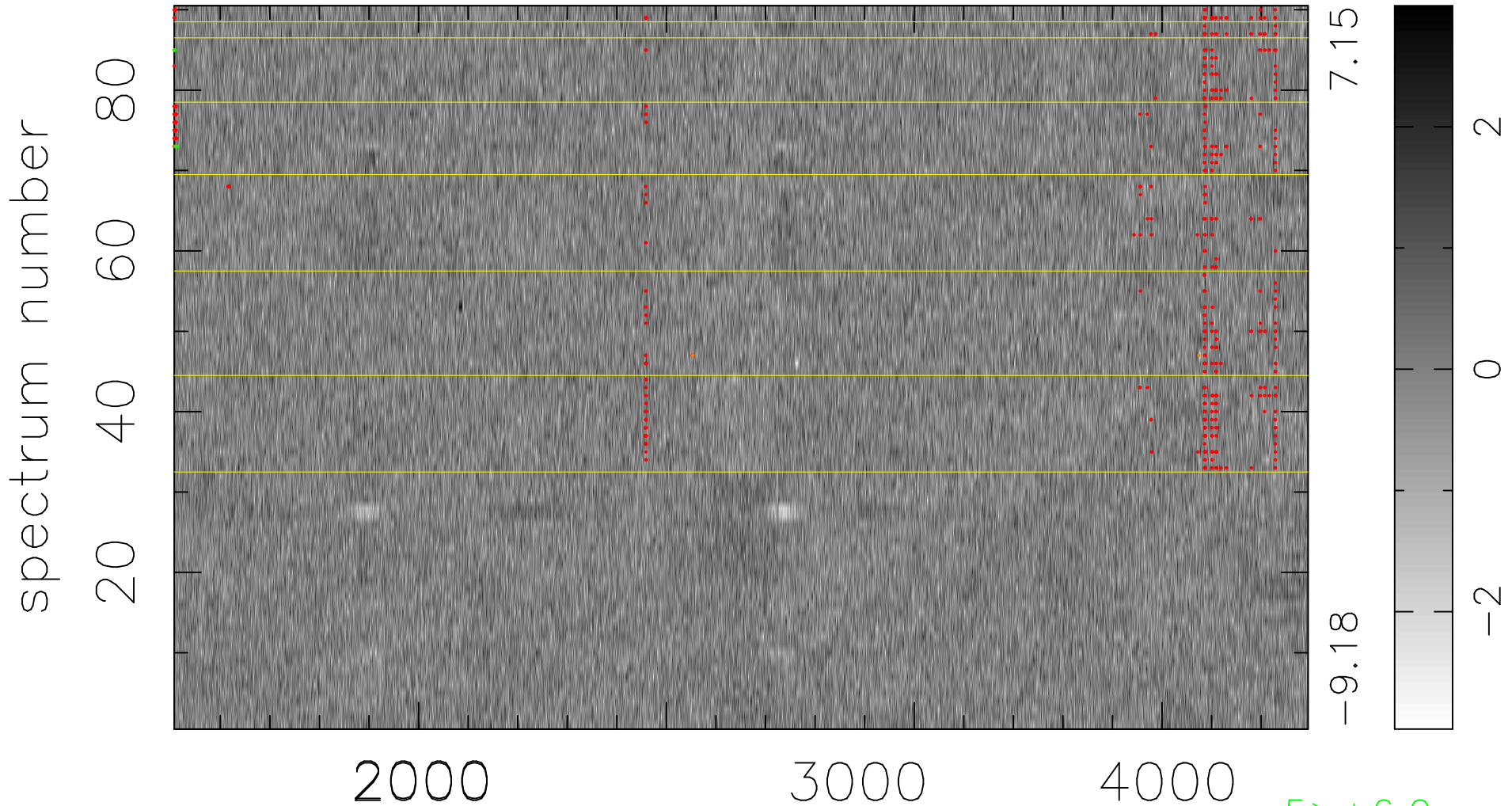


$$\chi(\lambda, t) = ( \text{Data} - \text{Model AC}_5\text{F} ) / \sigma \chi$$

$$\chi^2 / (411840 - 4953) = 0.931 \Rightarrow 1.007$$

4576x90



bad:449=0.11%

$\lambda$  (Å)  $z = 1.26352$

5 > +6.0 $\sigma$

6 < -6.0 $\sigma$