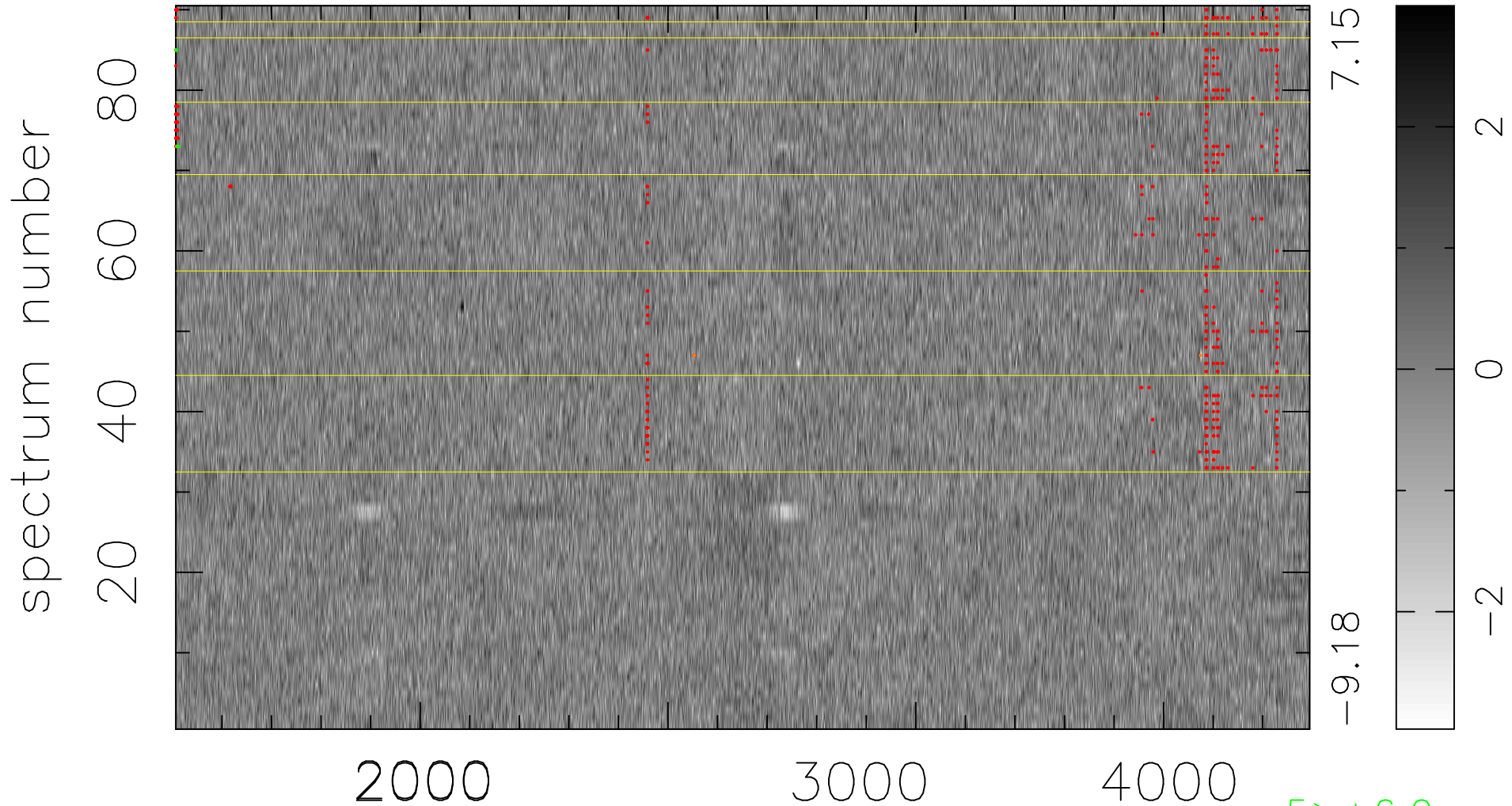


$$\chi(\lambda,t) = (\text{Data} - \text{Model } AC_5) / \sigma \chi$$

$$\chi^2 / (411840 - 4863) = 0.931 \Rightarrow 1.007$$

4576x90



bad:449=0.11%

λ (Å) $z = 1.26352$

5 > +6.0σ

6 < -6.0σ