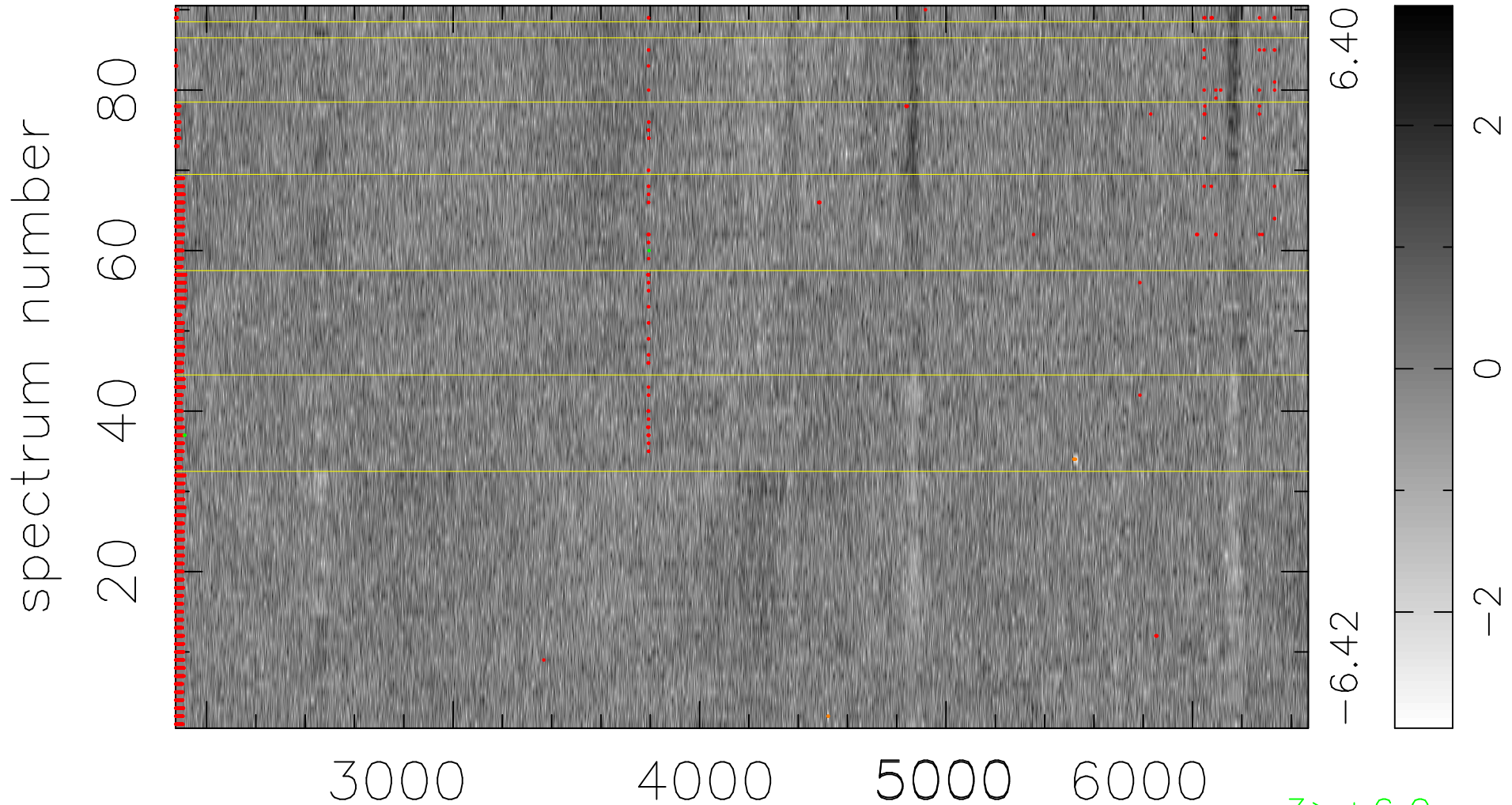


$$\chi(\lambda, t) = ( \text{Data} - \text{Model AC}_5\text{F} ) / \sigma \chi$$

$$\chi^2 / (413640 - 5078) = 0.899 \Rightarrow 1.005$$

4596x90



bad:2442=0.59%  $\lambda$  (Å)  $z = 0.46981$

3 > +6.0 $\sigma$

6 < -6.0 $\sigma$