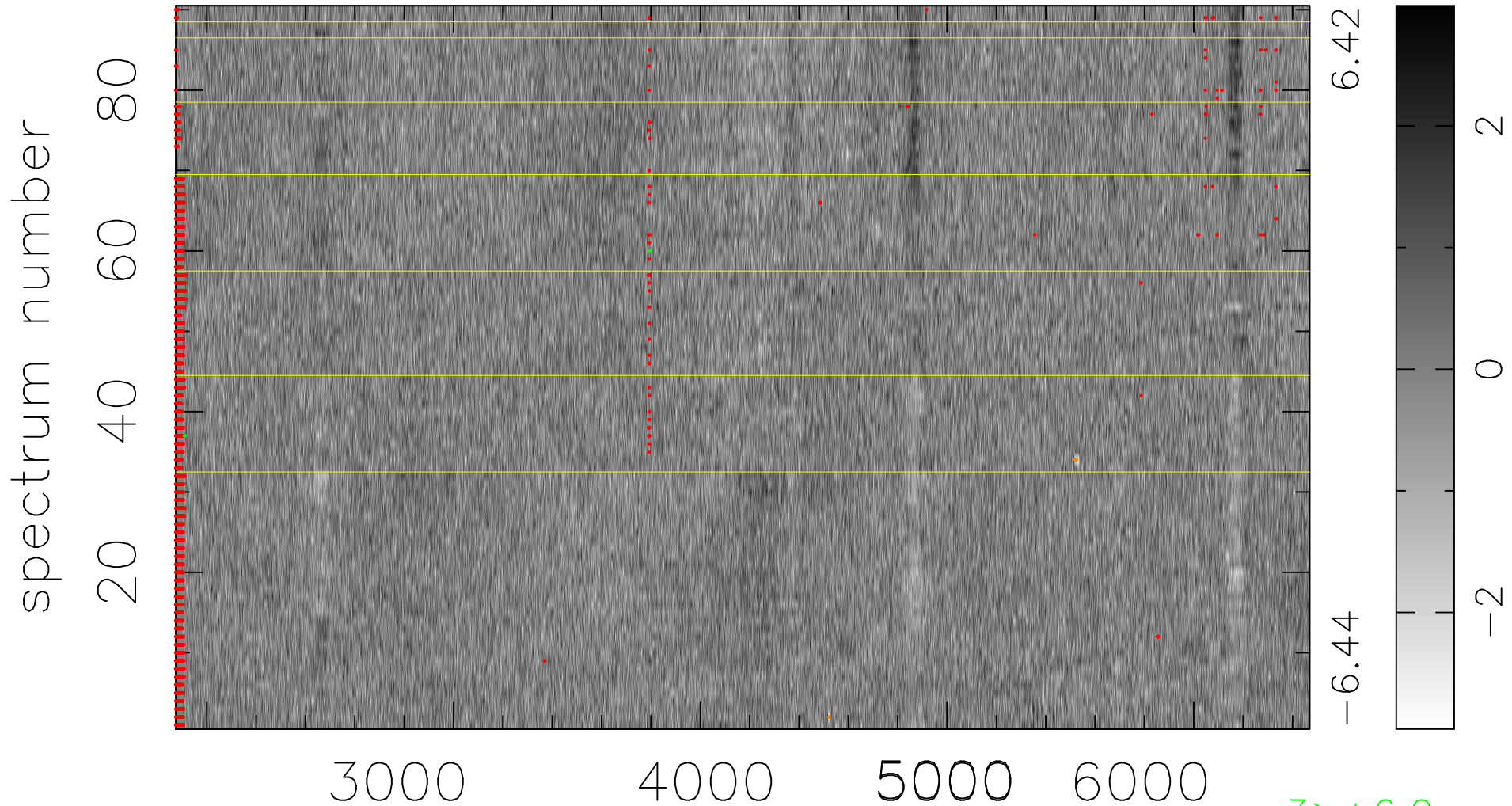


$$\chi(\lambda,t) = (\text{Data} - \text{Model } AC_5) / \sigma \chi$$

$$\chi^2 / (413640 - 4988) = 0.907 \Rightarrow 1.006$$

4596x90



bad:2442=0.59% λ (Å) $z = 0.46981$

3 > +6.0 σ

6 < -6.0 σ