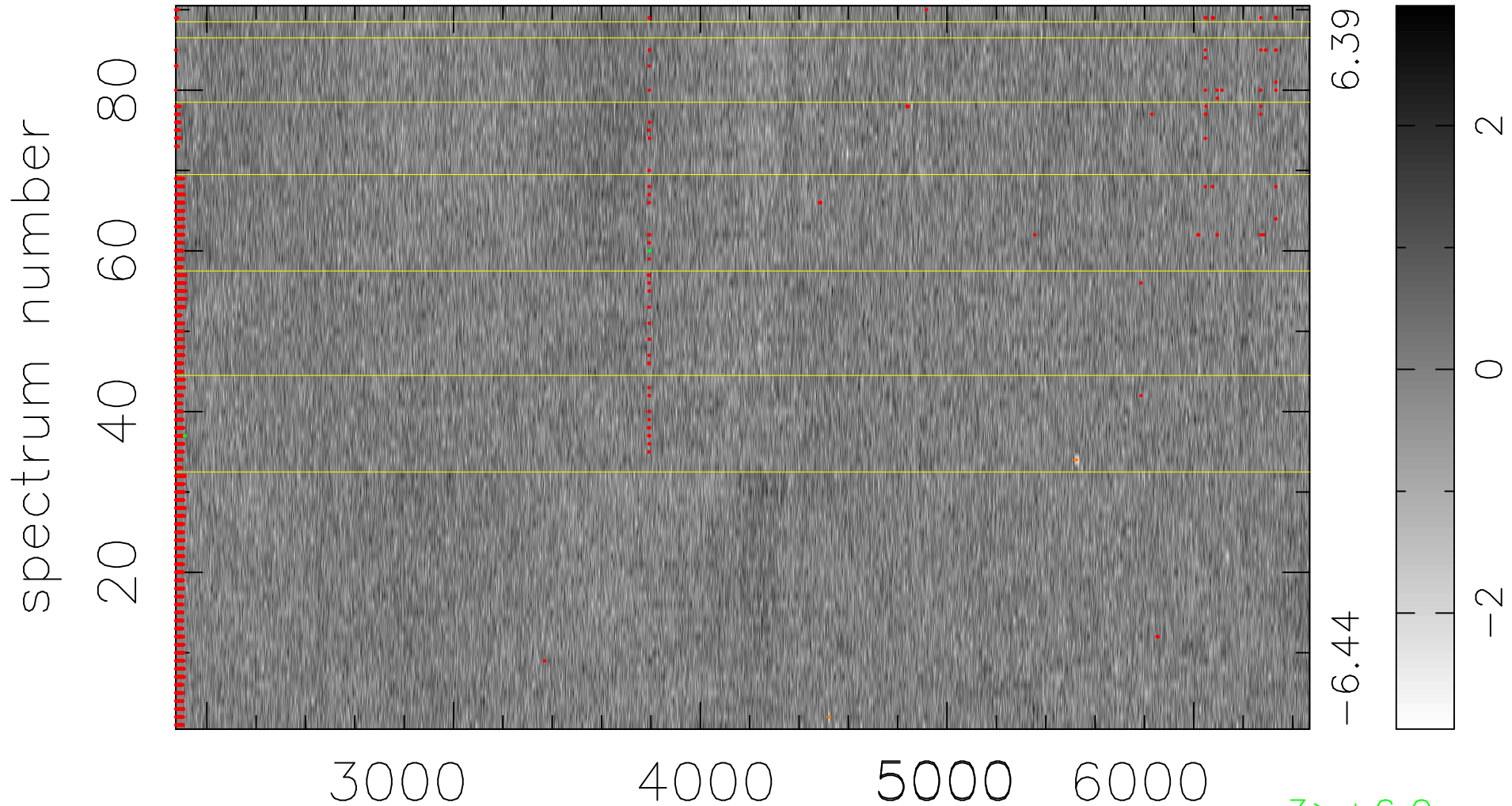


$$\chi(\lambda, t) = ( \text{Data} - \text{Model } \text{AC}_5\text{B}_4\text{F} ) / \sigma \chi$$

$$\chi^2 / (413640 - 5203) = 0.887 \Rightarrow 1.005$$

4596x90



bad:2442=0.59%  $\lambda$  (Å)  $z = 0.46981$

3 > +6.0 $\sigma$

5 < -6.0 $\sigma$