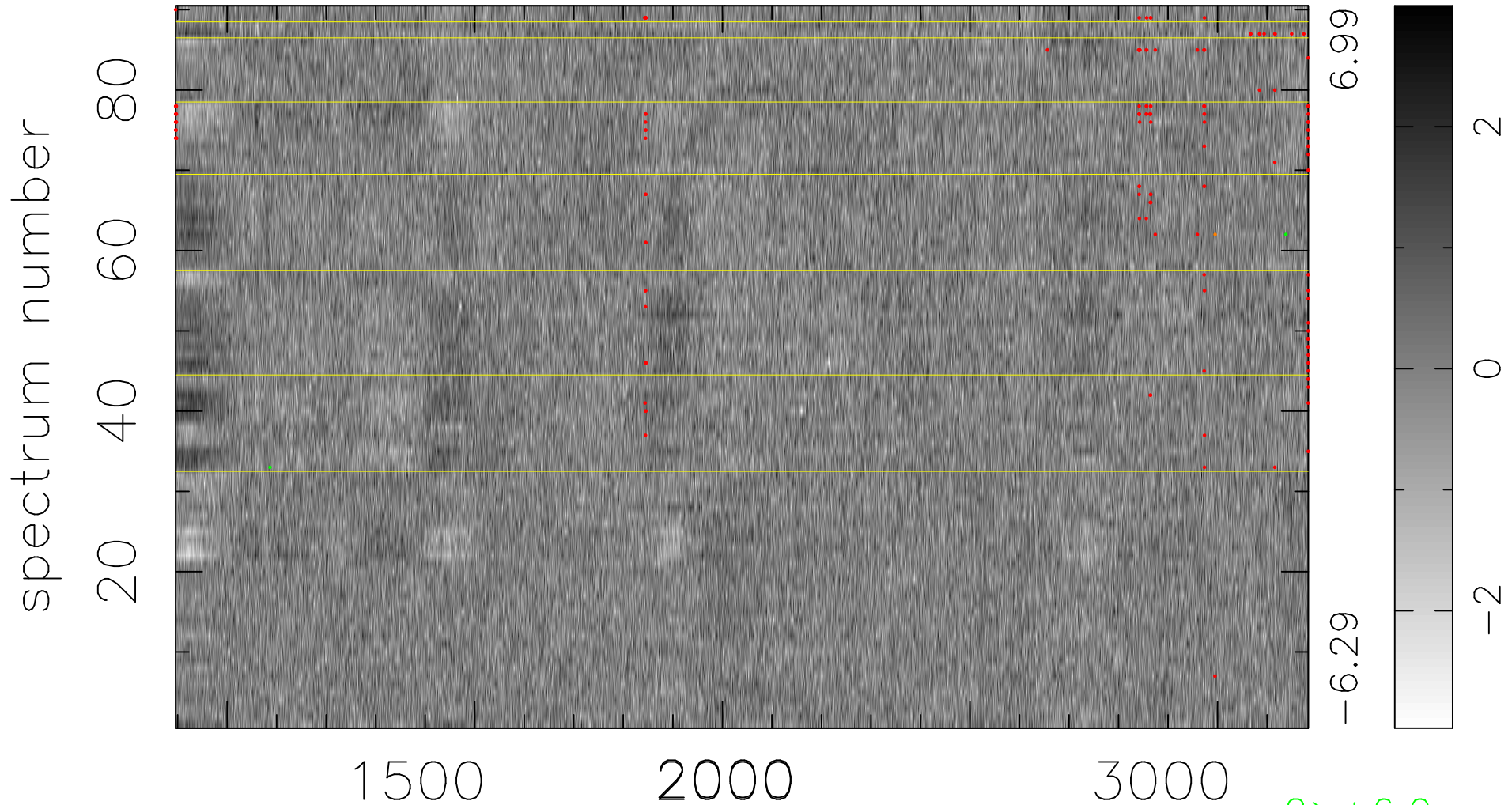


$$\chi(\lambda,t) = ( \text{Data} - \text{Model } AC_5 ) / \sigma \chi$$

$$\chi^2 / (411750 - 5236) = 0.939 \Rightarrow 1.007$$

4575x90



bad:156=0.038%  $\lambda$  (Å)  $z = 2.00258$

2 > +6.0 $\sigma$

1 < -6.0 $\sigma$