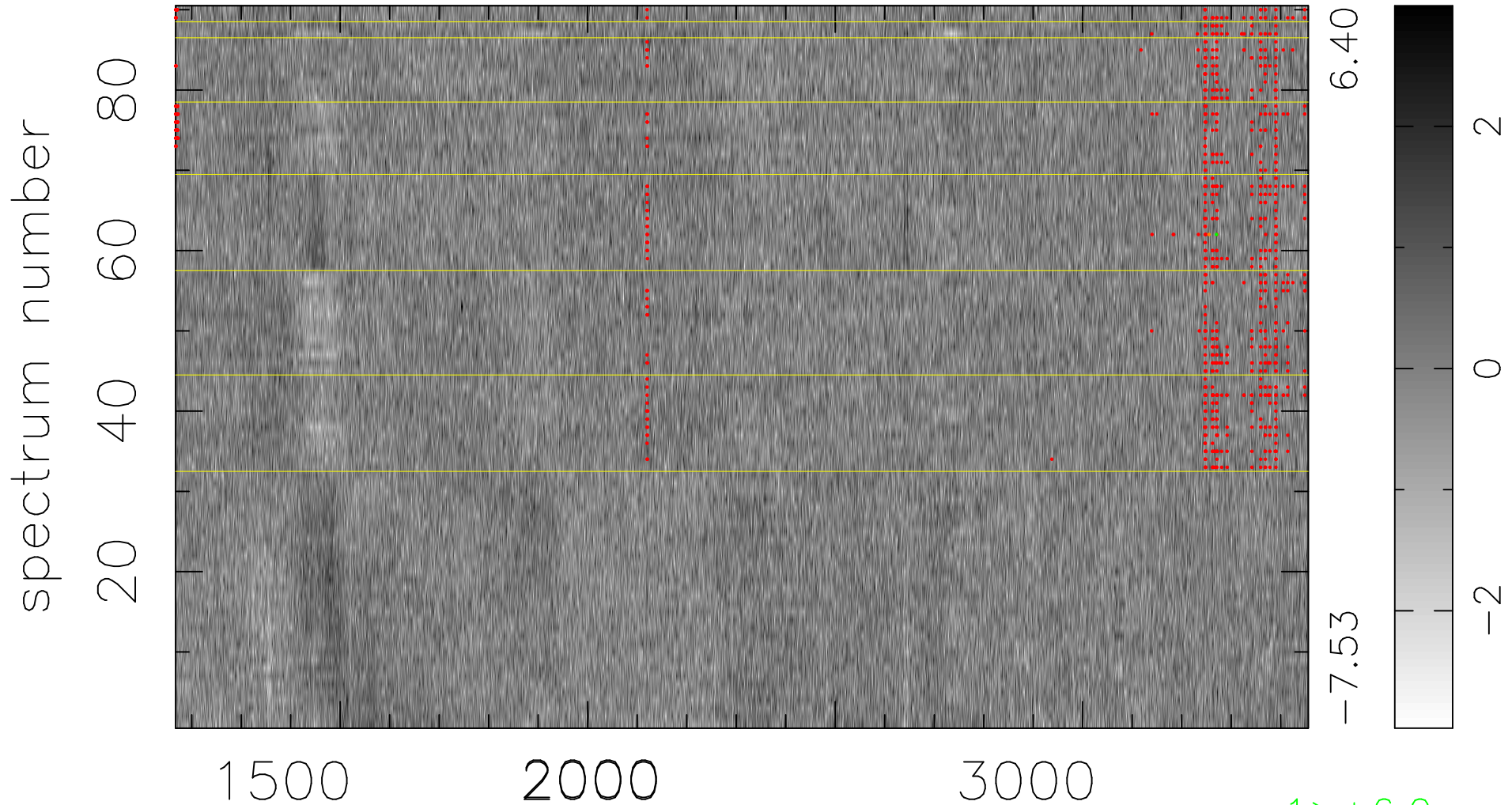


$$\chi(\lambda,t) = (\text{Data} - \text{Model } AC_5) / \sigma \chi$$

$$\chi^2 / (411930 - 5047) = 0.902 \Rightarrow 1.007$$

4577x90



bad:762=0.18%

λ (Å) $z = 1.64539$

1 > +6.0σ

1 < -6.0σ