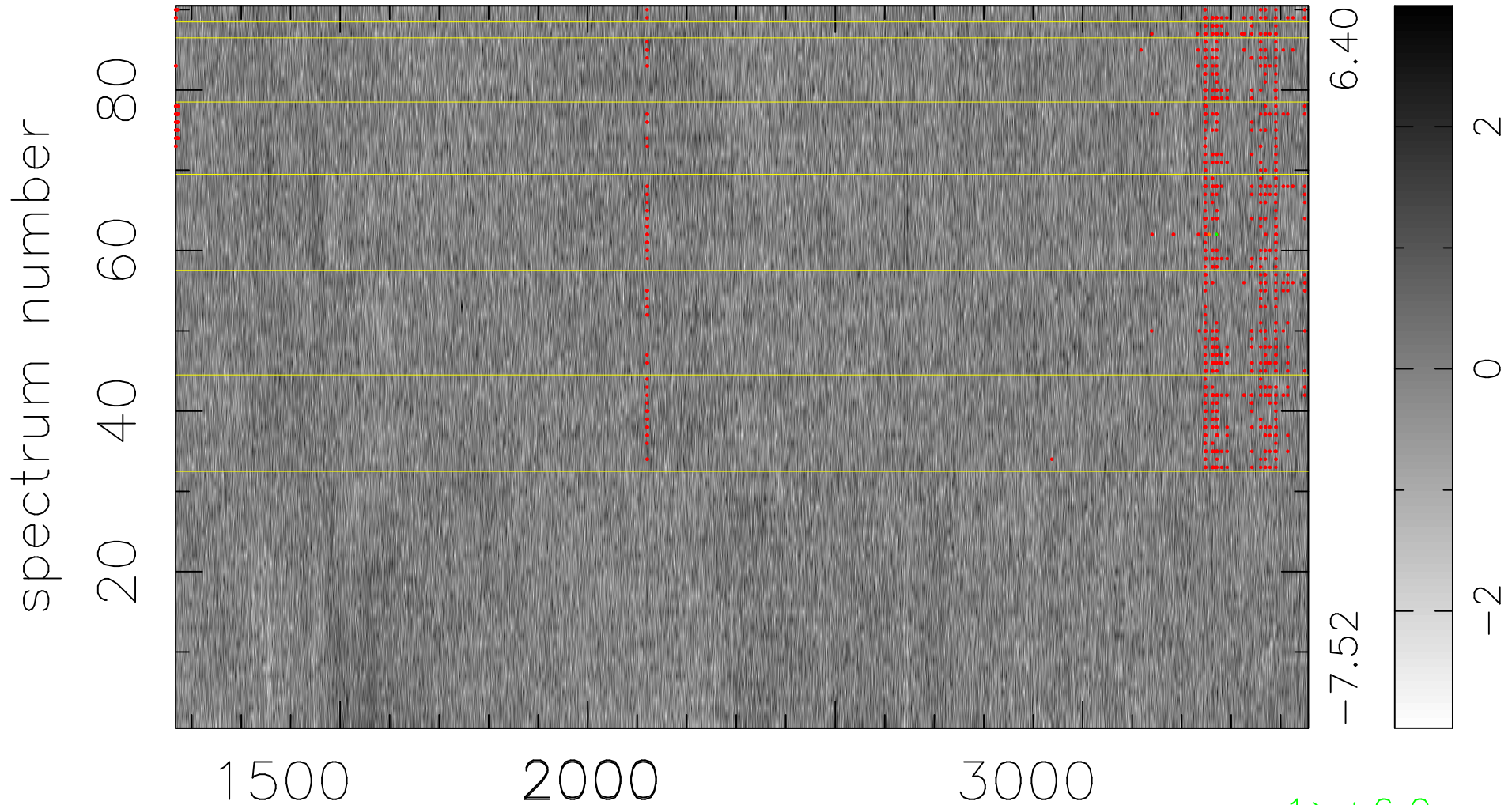


$$\chi(\lambda, t) = ( \text{Data} - \text{Model } \text{AC}_5\text{B}_5\text{F} ) / \sigma \chi$$

$$\chi^2 / (411930 - 5261) = 0.891 \Rightarrow 1.008$$

4577x90



bad:762=0.18%

$\lambda$  (Å)  $z = 1.64539$

1 > +6.0σ

1 < -6.0σ