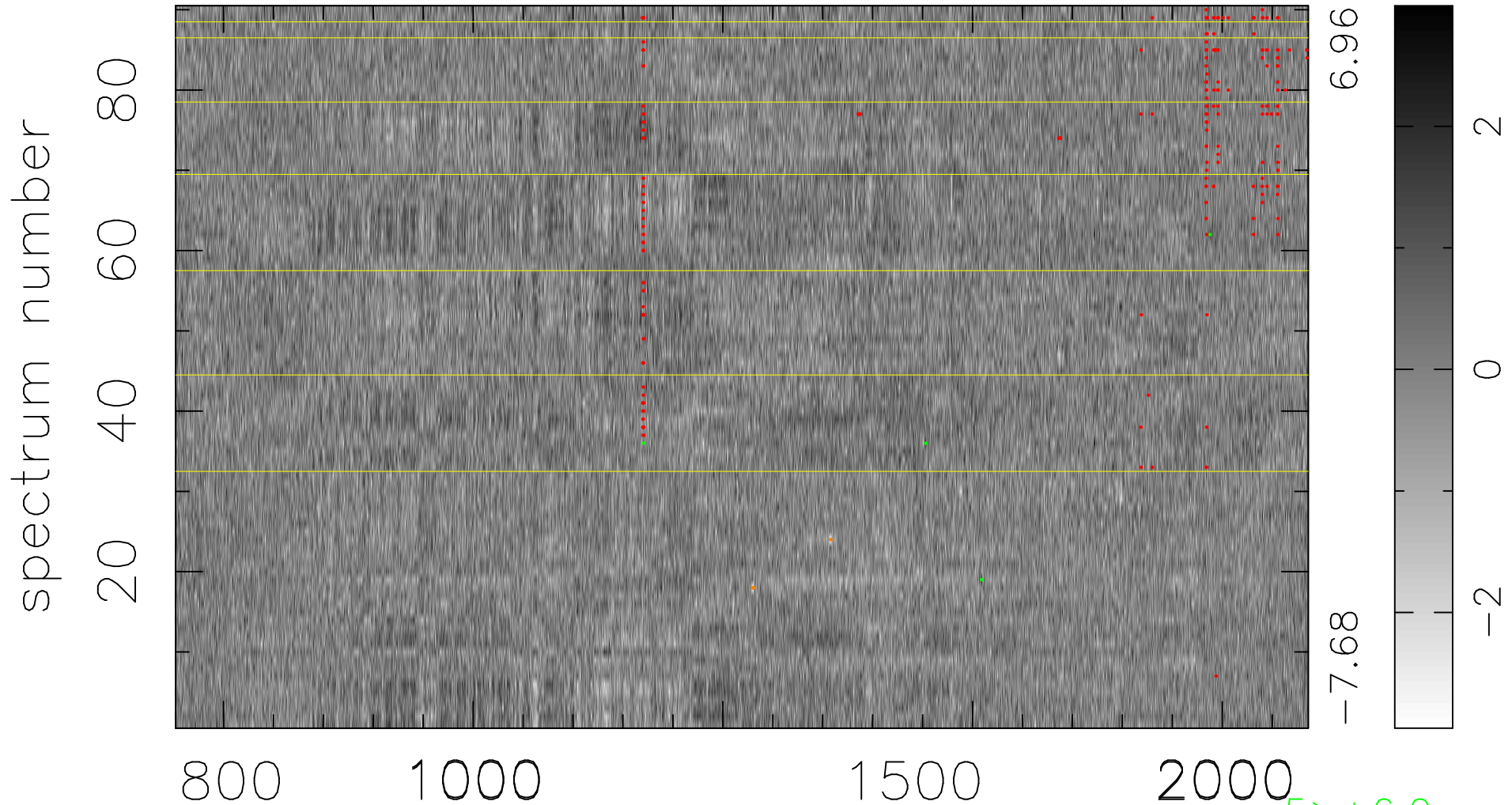


$$\chi(\lambda, t) = (\text{Data} - \text{Model AC}_5\text{F}) / \sigma \chi$$

$$\chi^2 / (408330 - 5212) = 1.045 \Rightarrow 1.004$$

4537 × 90



5 > +6.0σ

7 < -6.0σ

bad:225=0.055% λ (Å) z = 3.76819