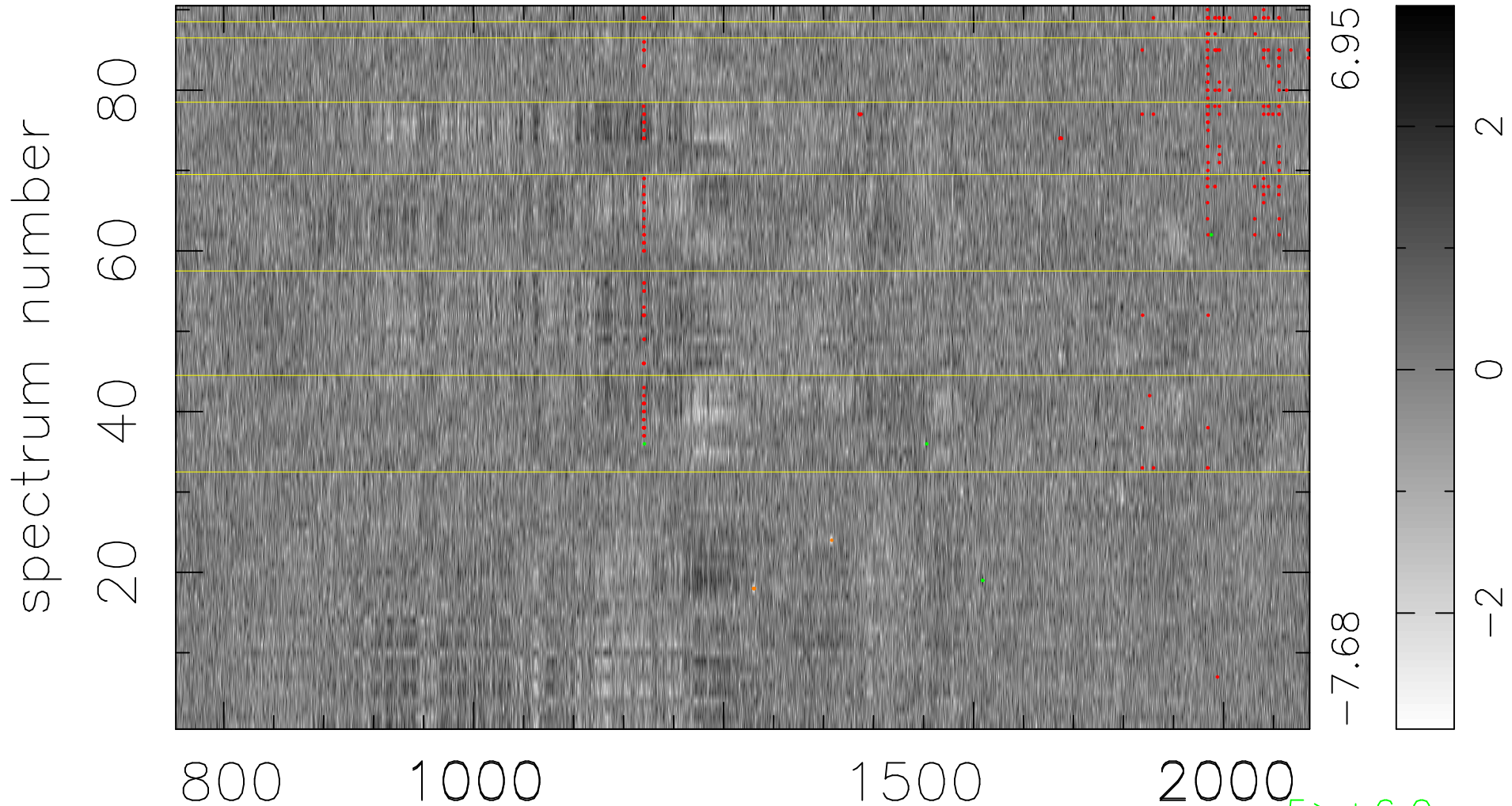


$$\chi(\lambda,t) = (\text{Data} - \text{Model } AC_5) / \sigma \chi$$

$$\chi^2 / (408330 - 5122) = 1.052 \Rightarrow 1.003$$

4537x90



bad:225=0.055% λ (Å) $z = 3.76819$

5 > +6.0σ

5 < -6.0σ