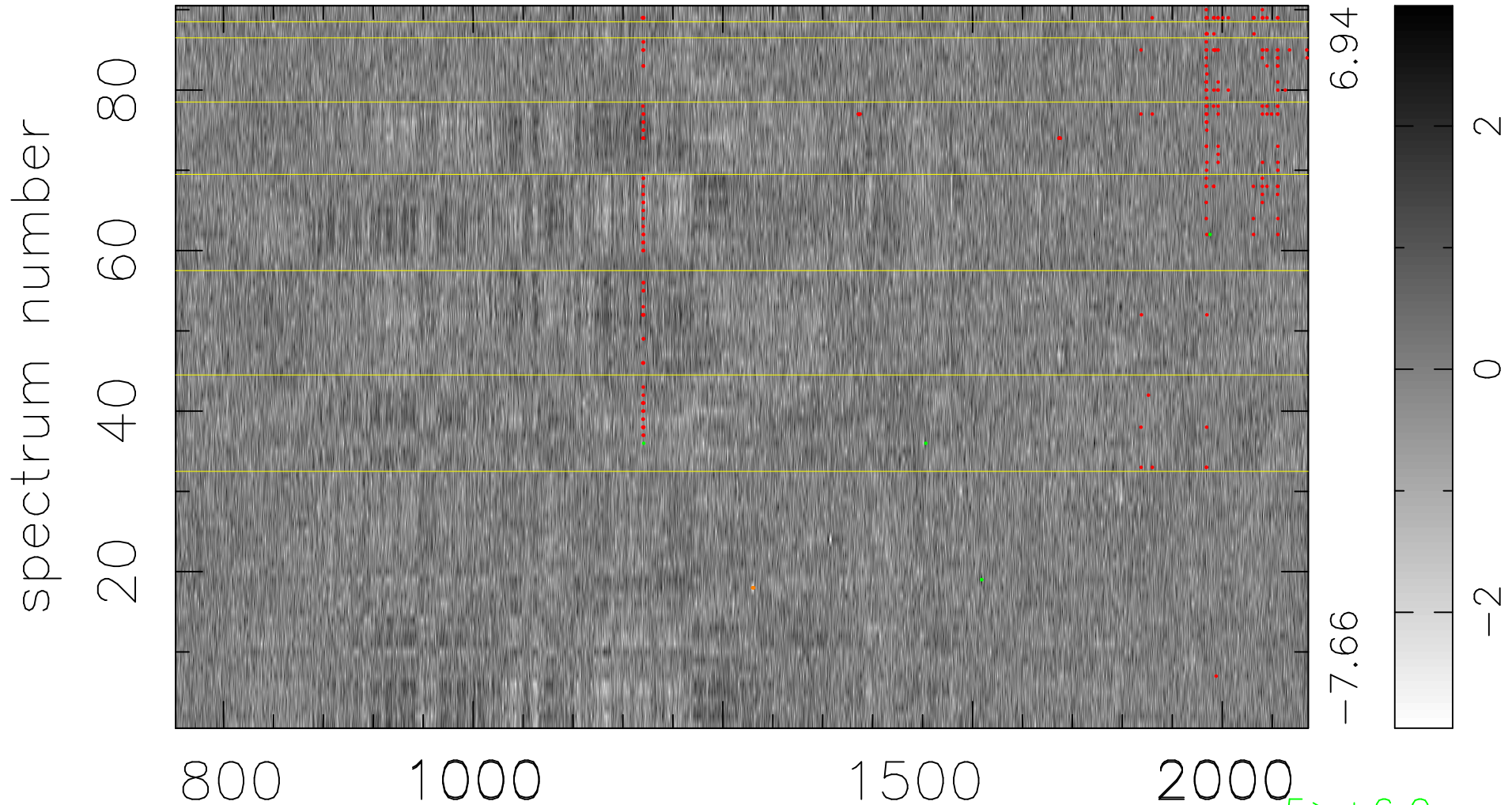


$$\chi(\lambda, t) = (\text{Data} - \text{Model } \text{AC}_5\text{B}_6\text{F}) / \sigma \chi$$

$$\chi^2 / (408330 - 5347) = 1.041 \Rightarrow 1.003$$

4537x90



bad:225=0.055% λ (Å) $z = 3.76819$

5 > +6.0 σ

4 < -6.0 σ