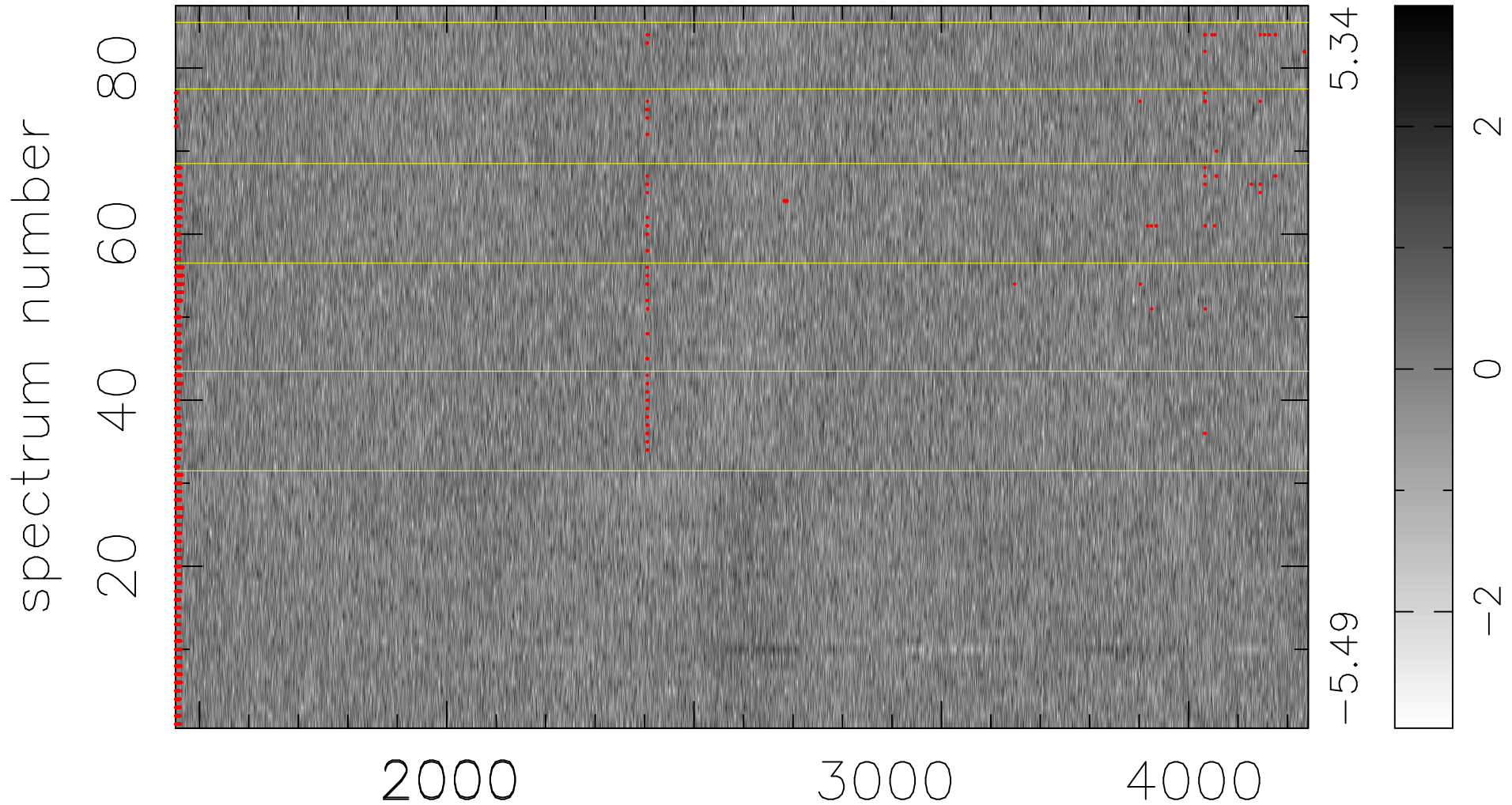


$$\chi(\lambda, t) = (\text{Data} - \text{Model } \text{AC}_5\text{B}_3\text{F}) / \sigma \chi$$

$$\chi^2 / (398547 - 5132) = 0.883 \Rightarrow 1.007$$

4581 × 87



bad:1555=0.39% λ (Å) $z = 1.31974$