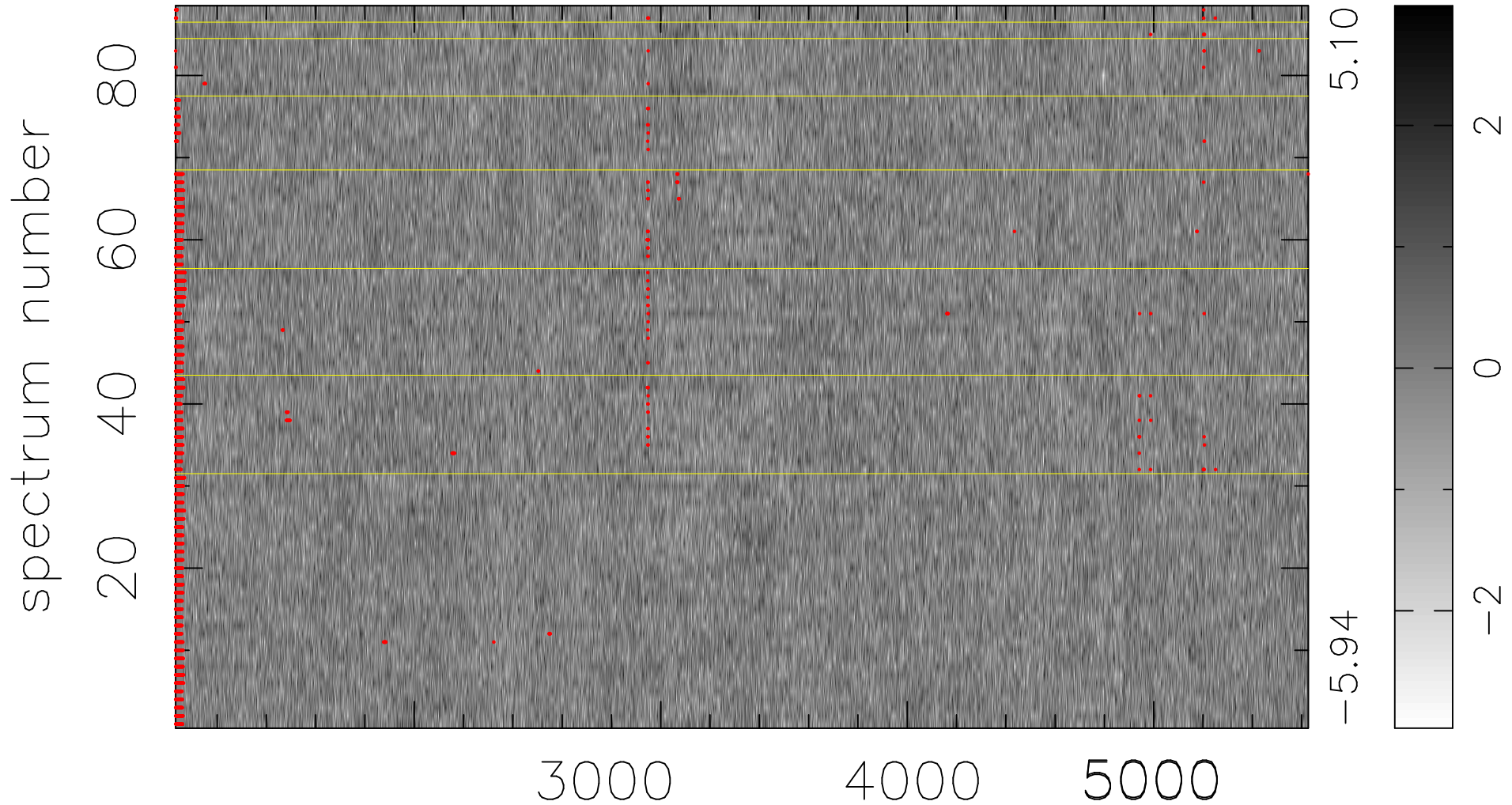


$$\chi(\lambda, t) = ( \text{Data} - \text{Model } \text{AC}_5\text{B}_3\text{F} ) / \sigma \chi$$

$$\chi^2 / (404448 - 5119) = 0.891 \Rightarrow 1.007$$

4596x88



bad:2309=0.57%  $\lambda$  (Å)  $z = 0.78529$