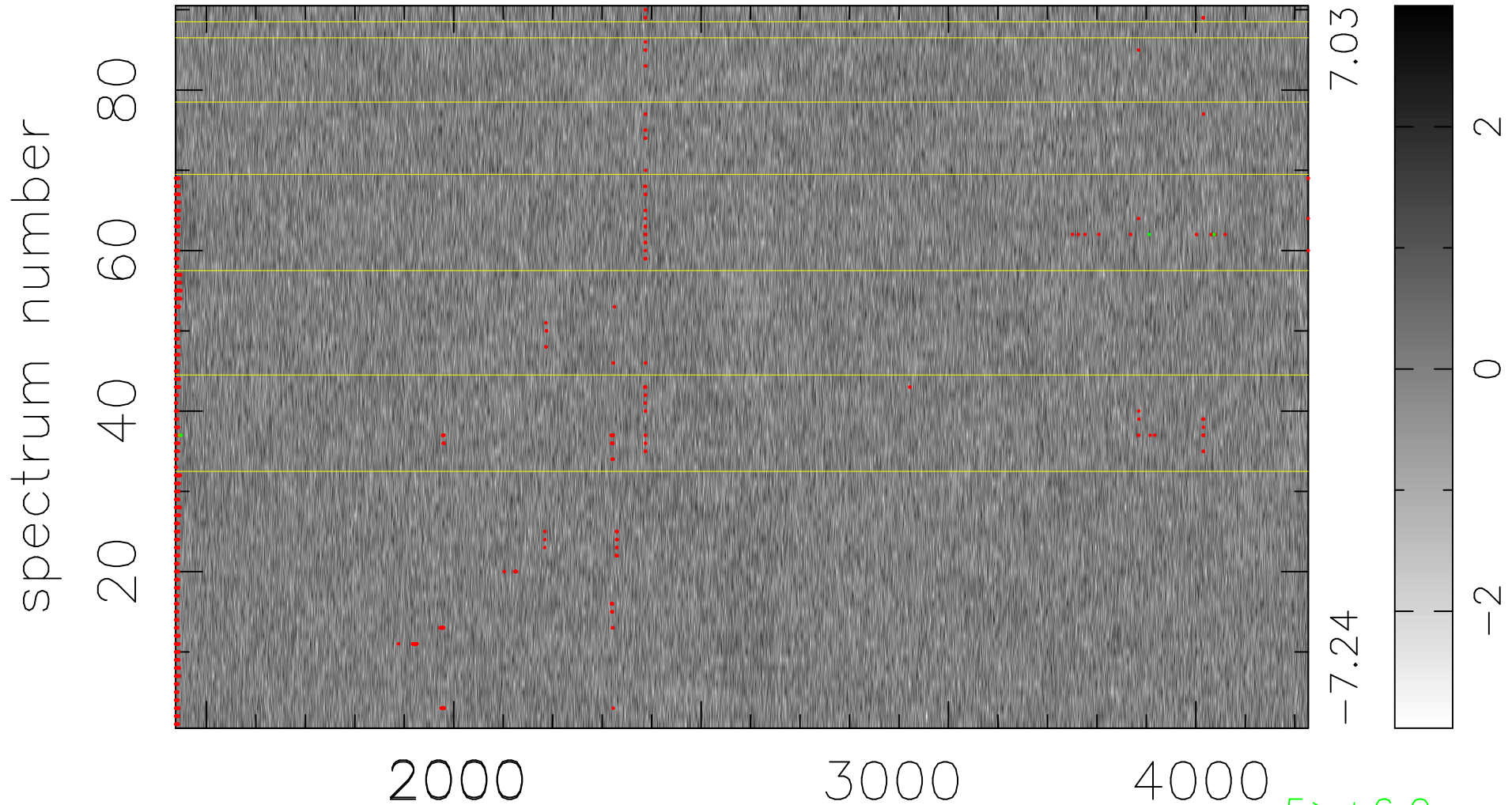


$$\chi(\lambda, t) = ( \text{Data} - \text{Model } \text{AC}_5\text{B}_4\text{F} ) / \sigma \chi$$

$$\chi^2 / (412200 - 5213) = 0.929 \Rightarrow 1.008$$

4580x90



7.03

-7.24

2

0

-2

5 > +6.0σ

3 < -6.0σ

bad:1099=0.27% λ (Å) z = 1.33910