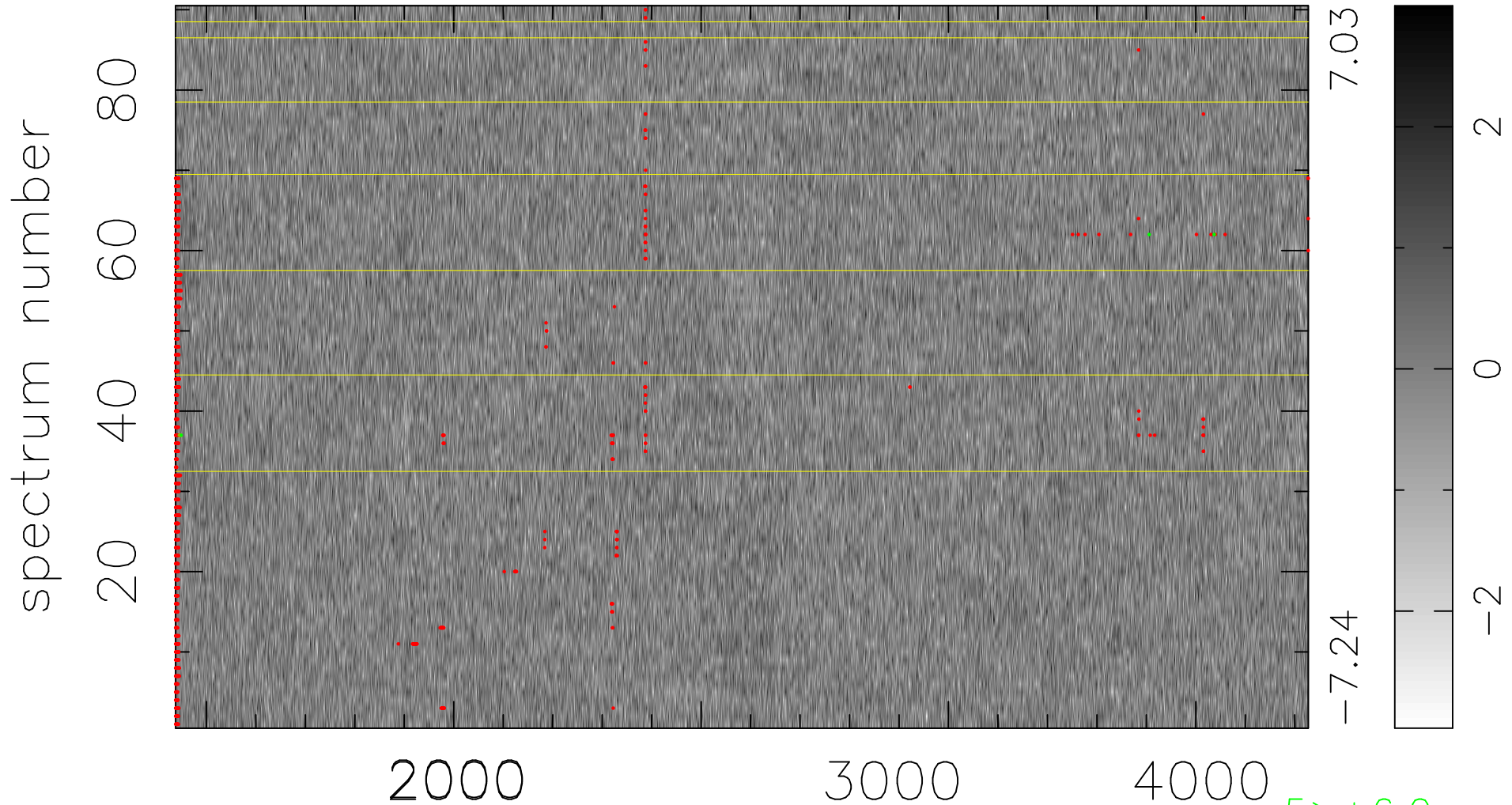


$$\chi(\lambda, t) = ( \text{Data} - \text{Model AC}_5\text{F} ) / \sigma \chi$$

$$\chi^2 / (412200 - 5054) = 0.930 \Rightarrow 1.008$$

4580x90



5 > +6.0σ

3 < -6.0σ

bad:1099=0.27%    λ (Å)    z = 1.33910