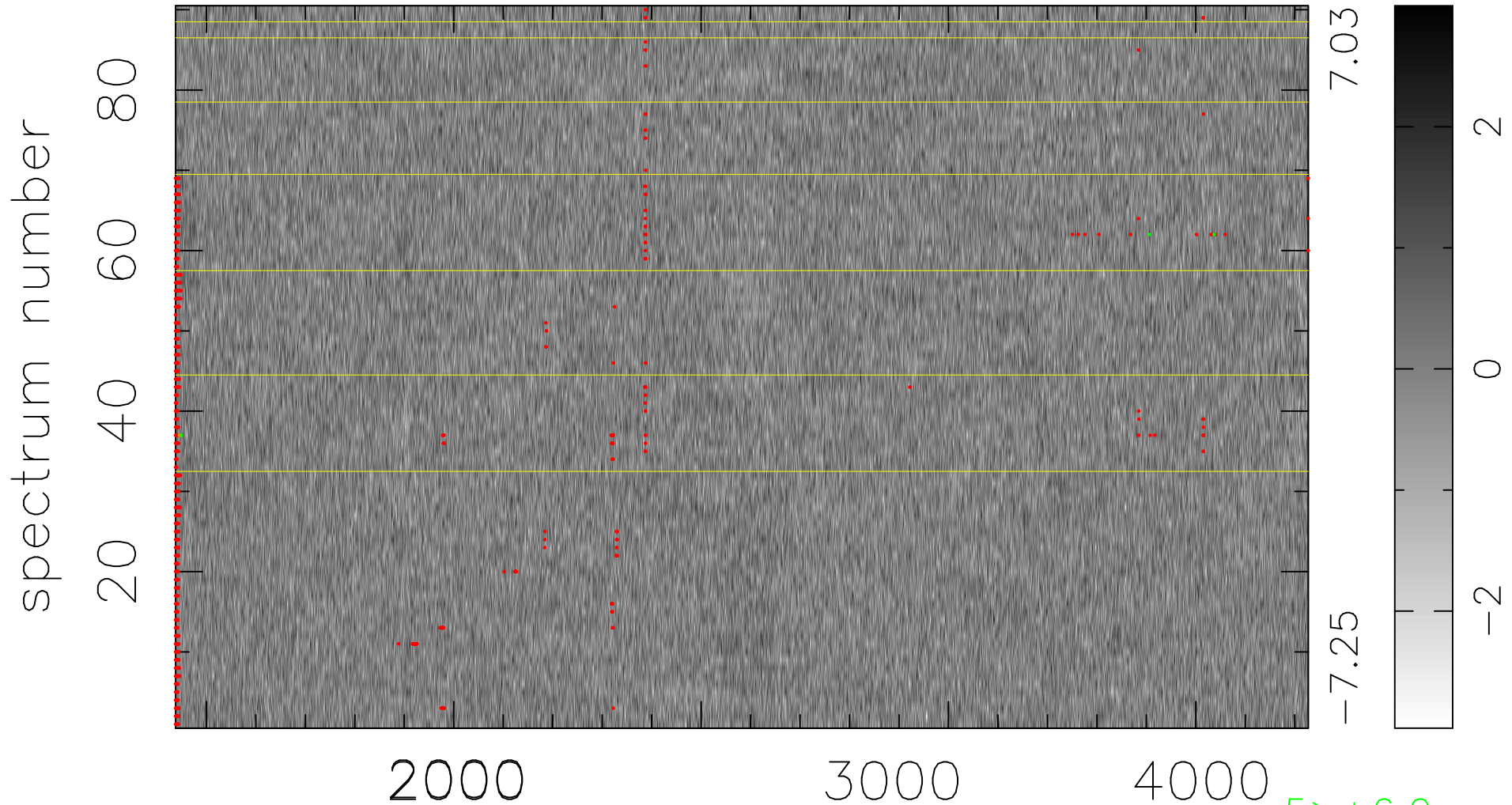


$$\chi(\lambda,t) = ( \text{Data} - \text{Model } AC_5 ) / \sigma \chi$$

$$\chi^2 / (412200 - 4964) = 0.930 \Rightarrow 1.008$$

4580x90



bad:1099=0.27%  $\lambda$  (Å)  $z = 1.33910$

5 > +6.0 $\sigma$

3 < -6.0 $\sigma$