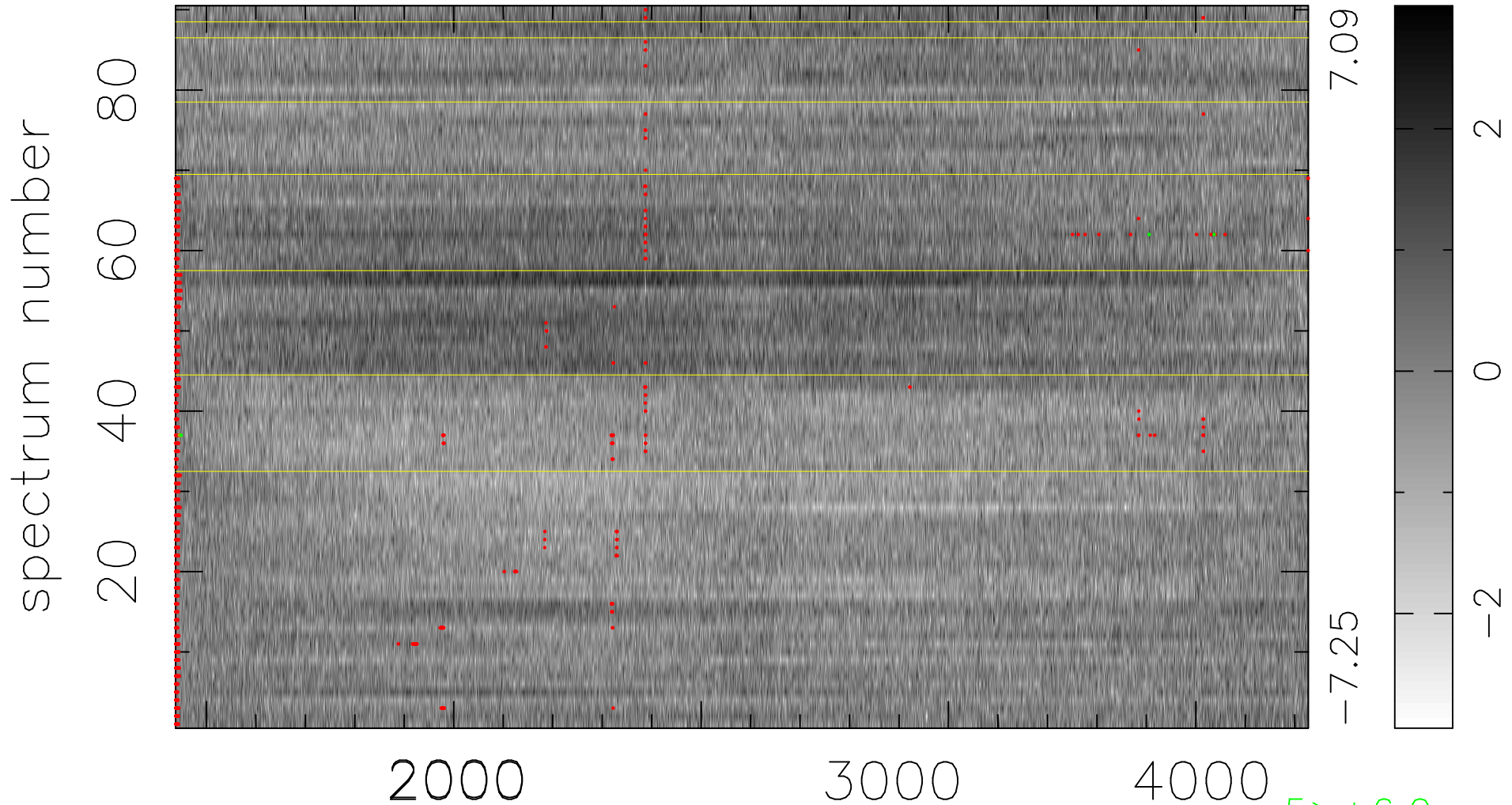


$$\chi(\lambda, t) = (\text{Data} - \text{Model A}) / \sigma \chi$$

$$\chi^2 / (412200 - 4964) = 1.106 \Rightarrow 1.007$$

4580x90



bad:1099=0.27% λ (Å) $z = 1.33910$

5 > +6.0σ

3 < -6.0σ