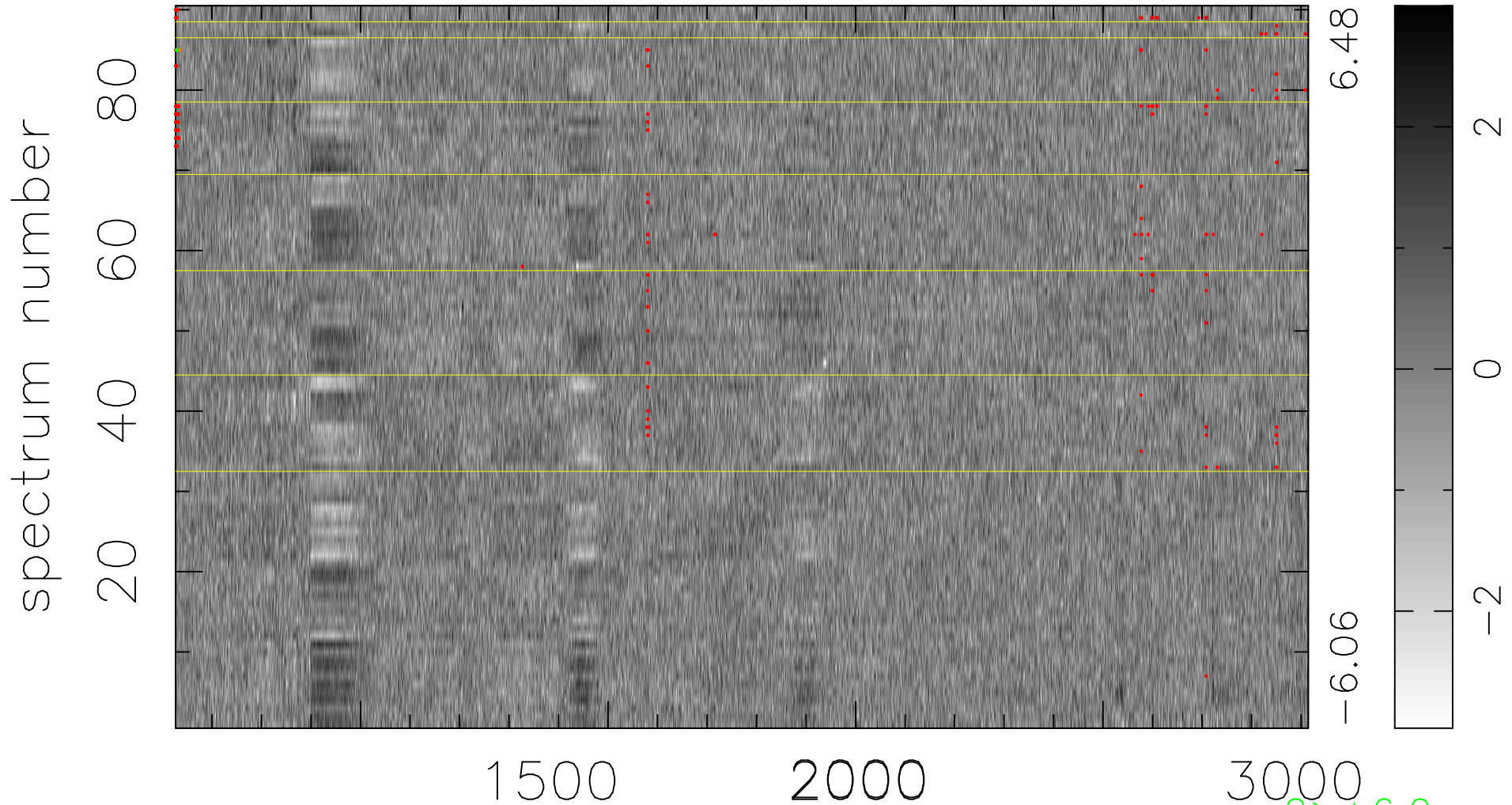


$$\chi(\lambda, t) = (\text{Data} - \text{Model AC}_5\text{F}) / \sigma \chi$$

$$\chi^2 / (411930 - 5339) = 0.995 \Rightarrow 1.007$$

4577x90



bad:218=0.053% λ (Å) $z = 2.39237$

2 > +6.0 σ

1 < -6.0 σ