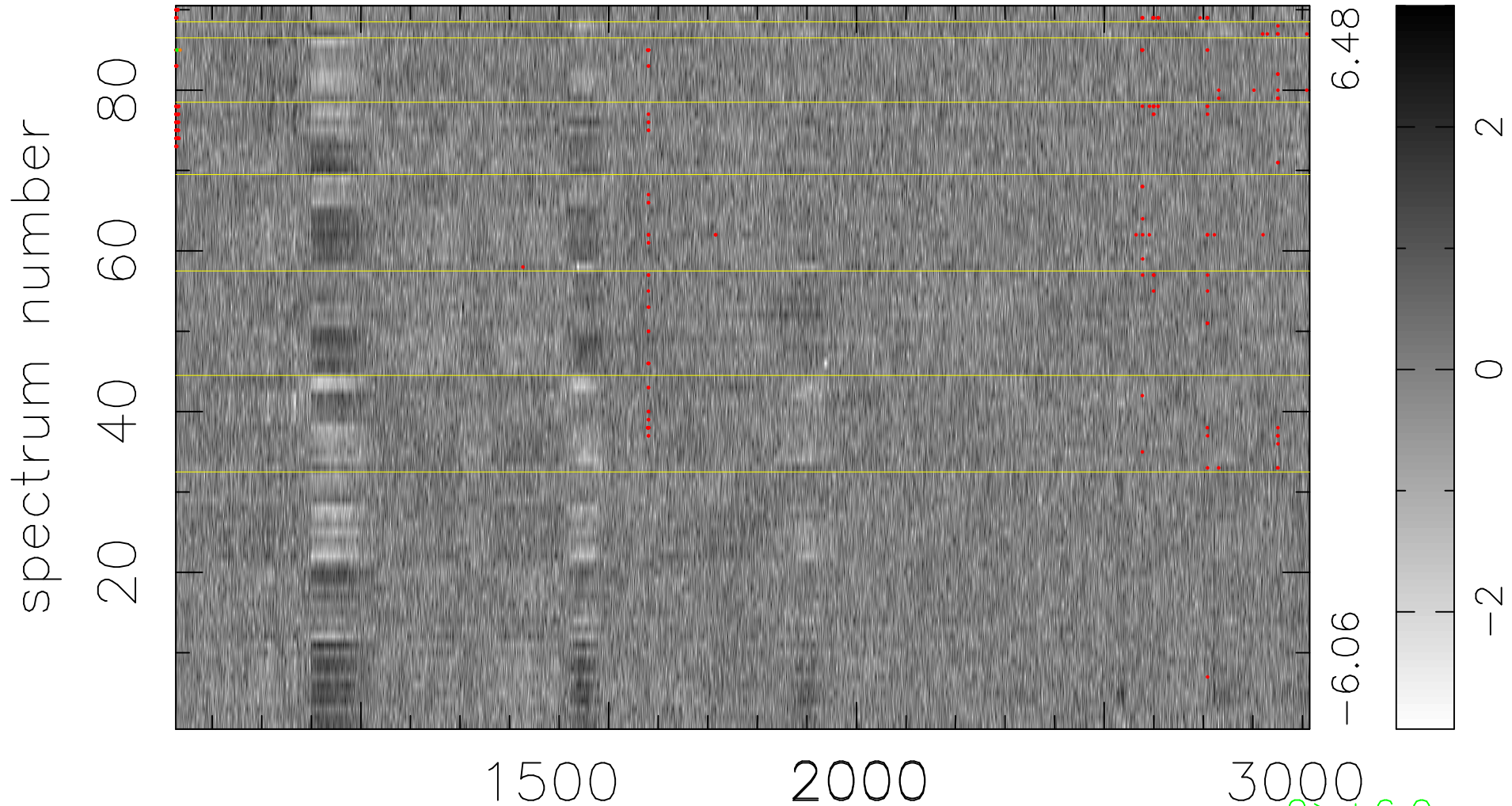


$$\chi(\lambda, t) = ( \text{Data} - \text{Model } AC_5 ) / \sigma \chi$$

$$\chi^2 / (411930 - 5249) = 0.995 \Rightarrow 1.007$$

4577x90



6.48  
-6.06

2  
0  
-2

2 > +6.0σ  
1 < -6.0σ

bad:218=0.053%    λ (Å)    z = 2.39237