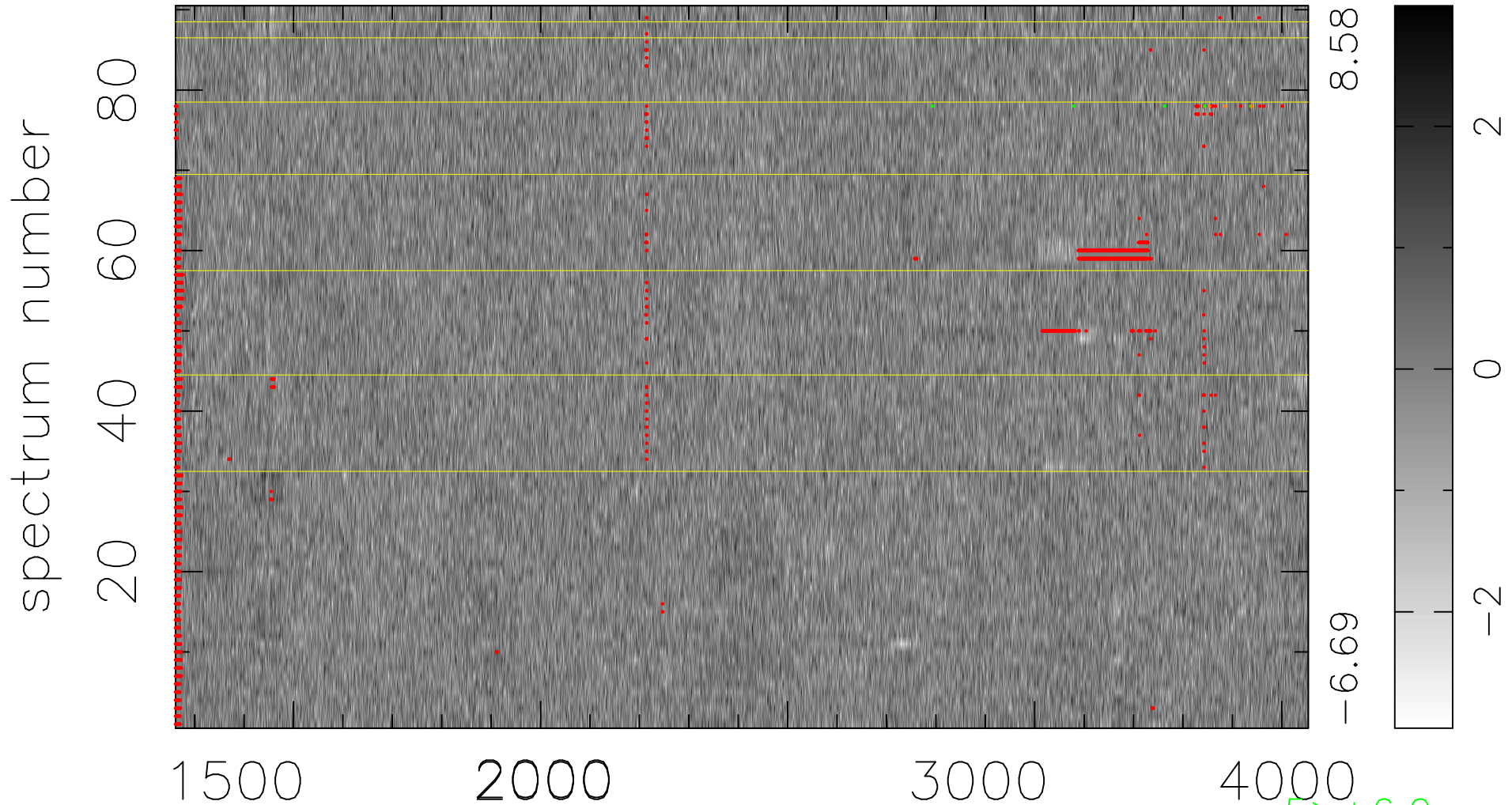


$$\chi(\lambda,t) = ( \text{Data} - \text{Model } AC_5 ) / \sigma \chi$$

$$\chi^2 / (412650 - 4973) = 0.929 \Rightarrow 1.007$$

4585x90



bad:2365=0.57%  $\lambda$  (Å)  $z = 1.53278$

5 > +6.0 $\sigma$

4 < -6.0 $\sigma$