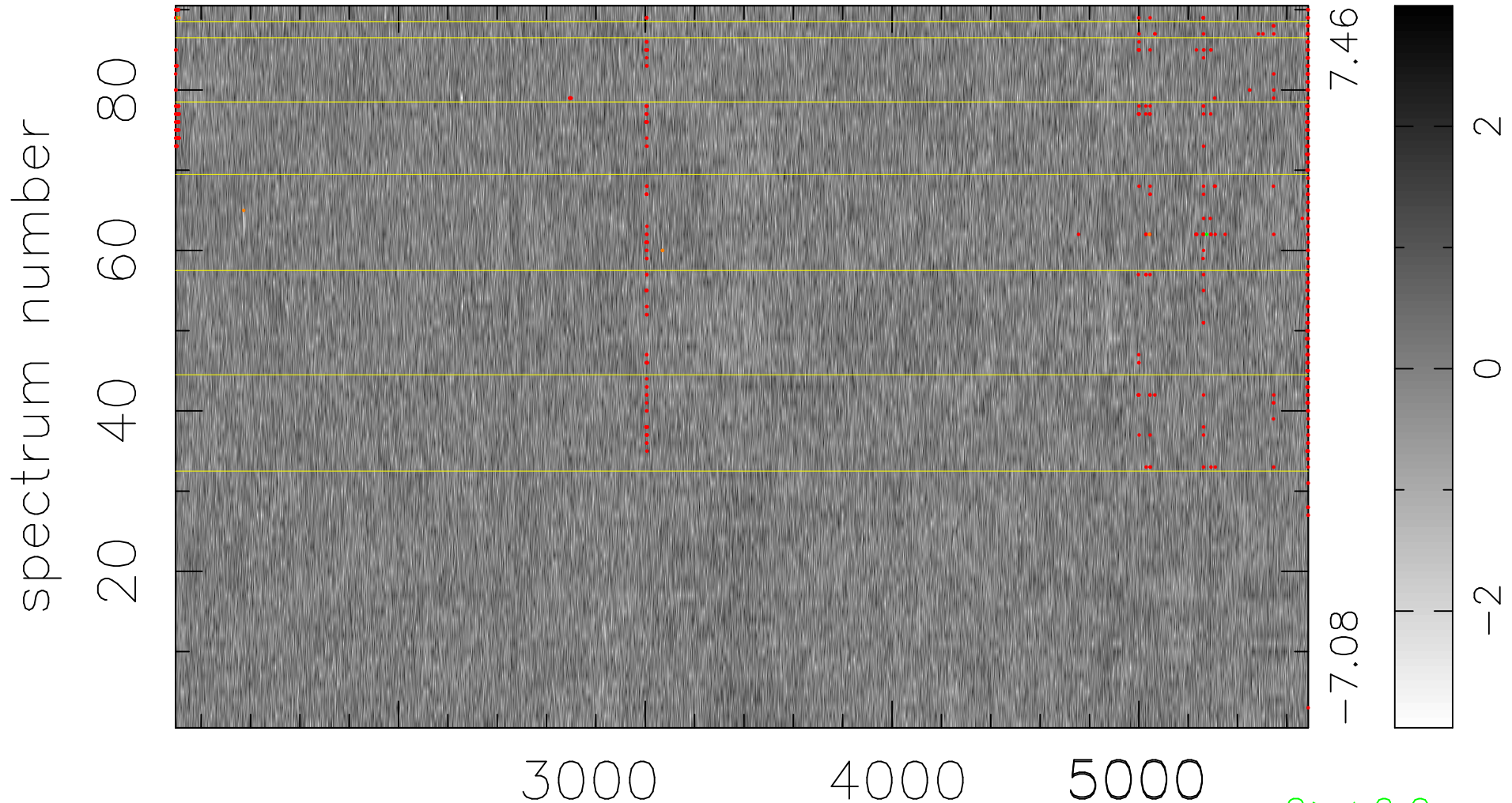


$$\chi(\lambda, t) = ( \text{Data} - \text{Model } \text{AC}_5\text{B}_3\text{F} ) / \sigma \chi$$

$$\chi^2 / (413190 - 5131) = 0.946 \Rightarrow 1.006$$

4591 × 90



bad:602=0.15%

$\lambda$  (Å)  $z = 0.76172$

2 > +6.0σ

5 < -6.0σ