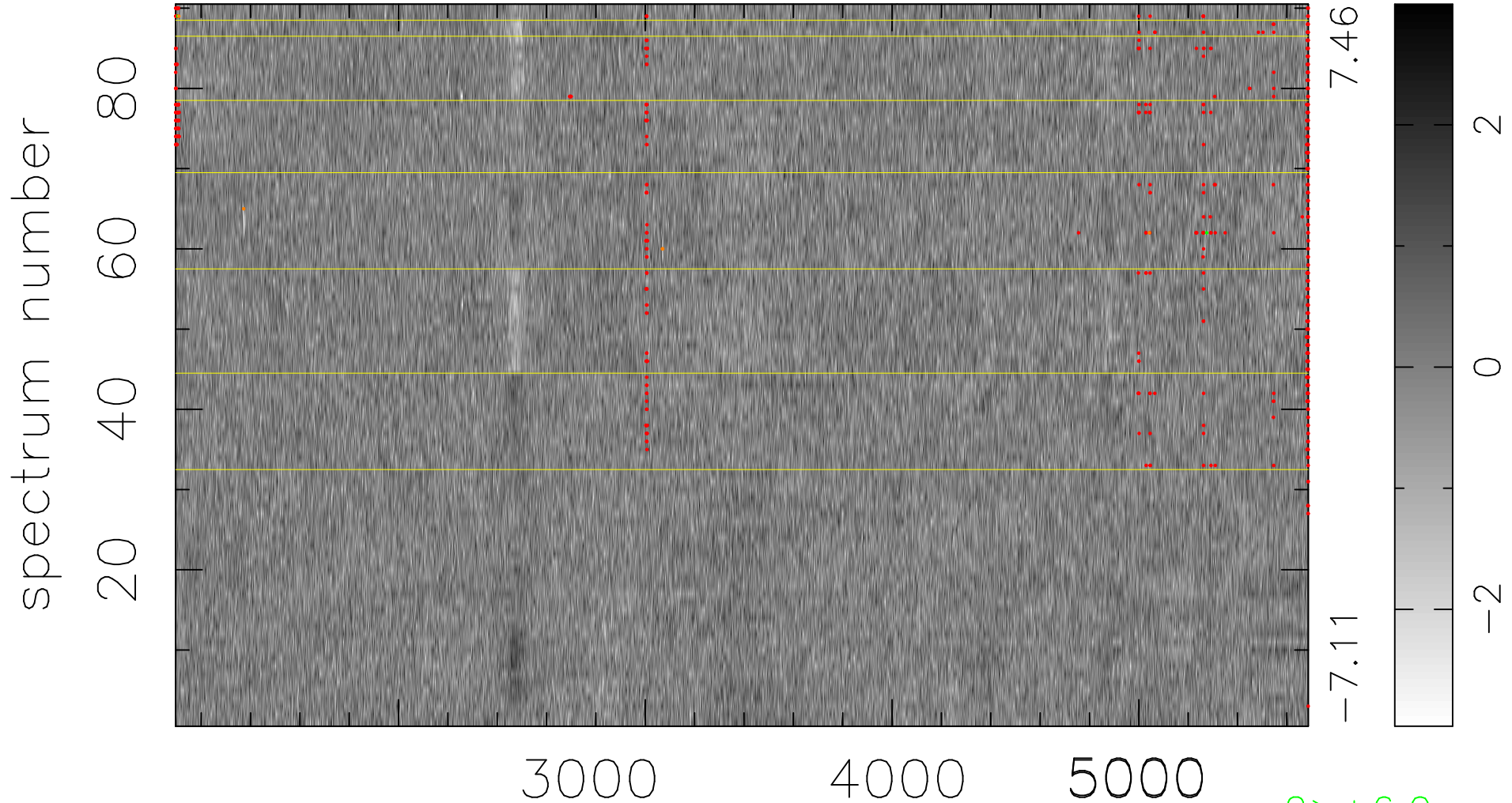


$$\chi(\lambda,t) = (\text{Data} - \text{Model } AC_5) / \sigma \chi$$

$$\chi^2 / (413190 - 4873) = 0.952 \Rightarrow 1.006$$

4591 × 90



7.46

-7.11

2

0

-2

2 > +6.0σ

5 < -6.0σ

bad:602=0.15%

λ (Å) z = 0.76172