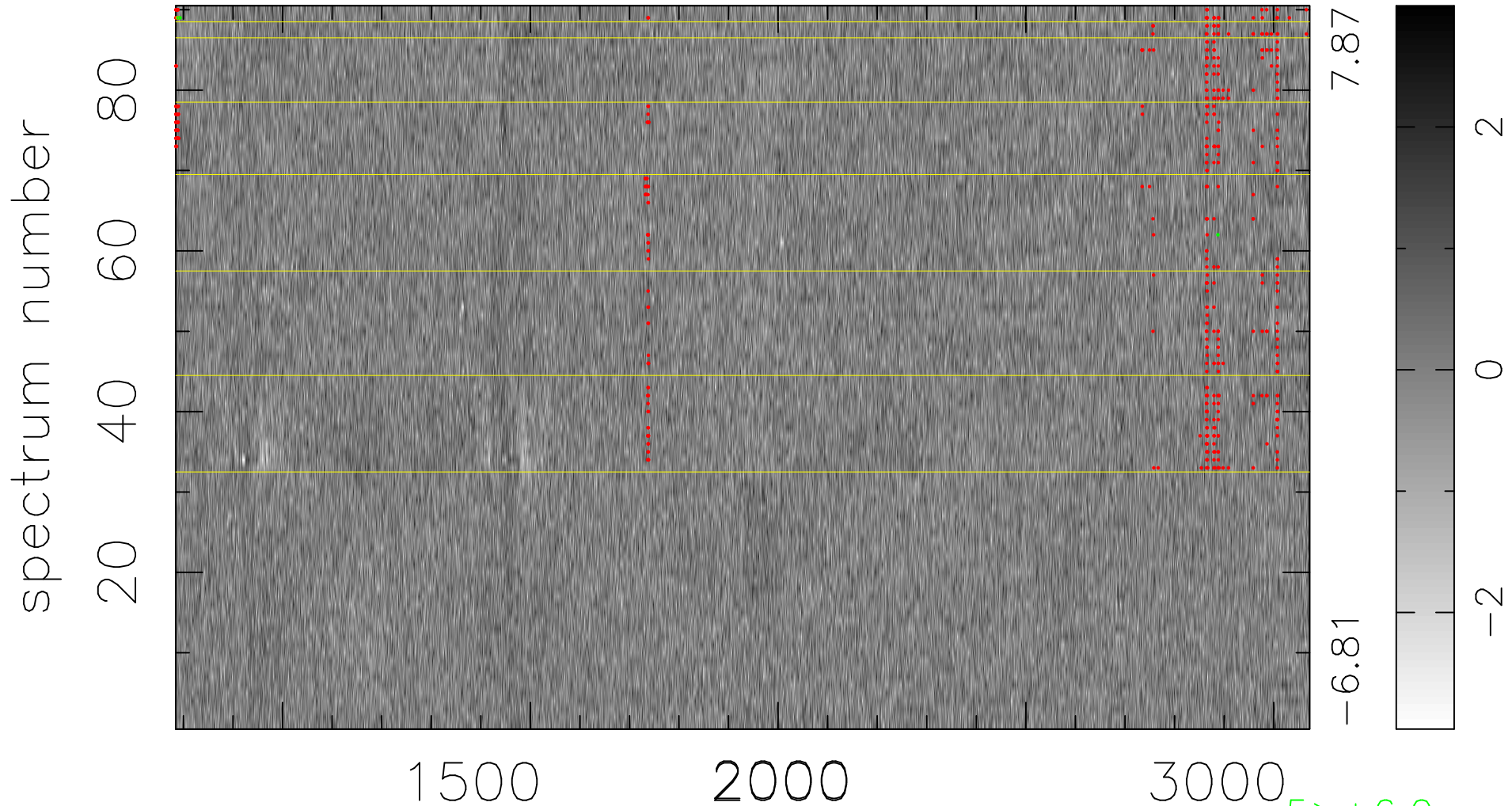


$$\chi(\lambda, t) = (\text{Data} - \text{Model } \text{AC}_5\text{B}_7\text{F}) / \sigma \chi$$

$$\chi^2 / (411930 - 5512) = 0.913 \Rightarrow 1.007$$

4577 × 90



bad:476=0.12%

λ (Å) $z = 2.15490$

5 > +6.0σ

3 < -6.0σ