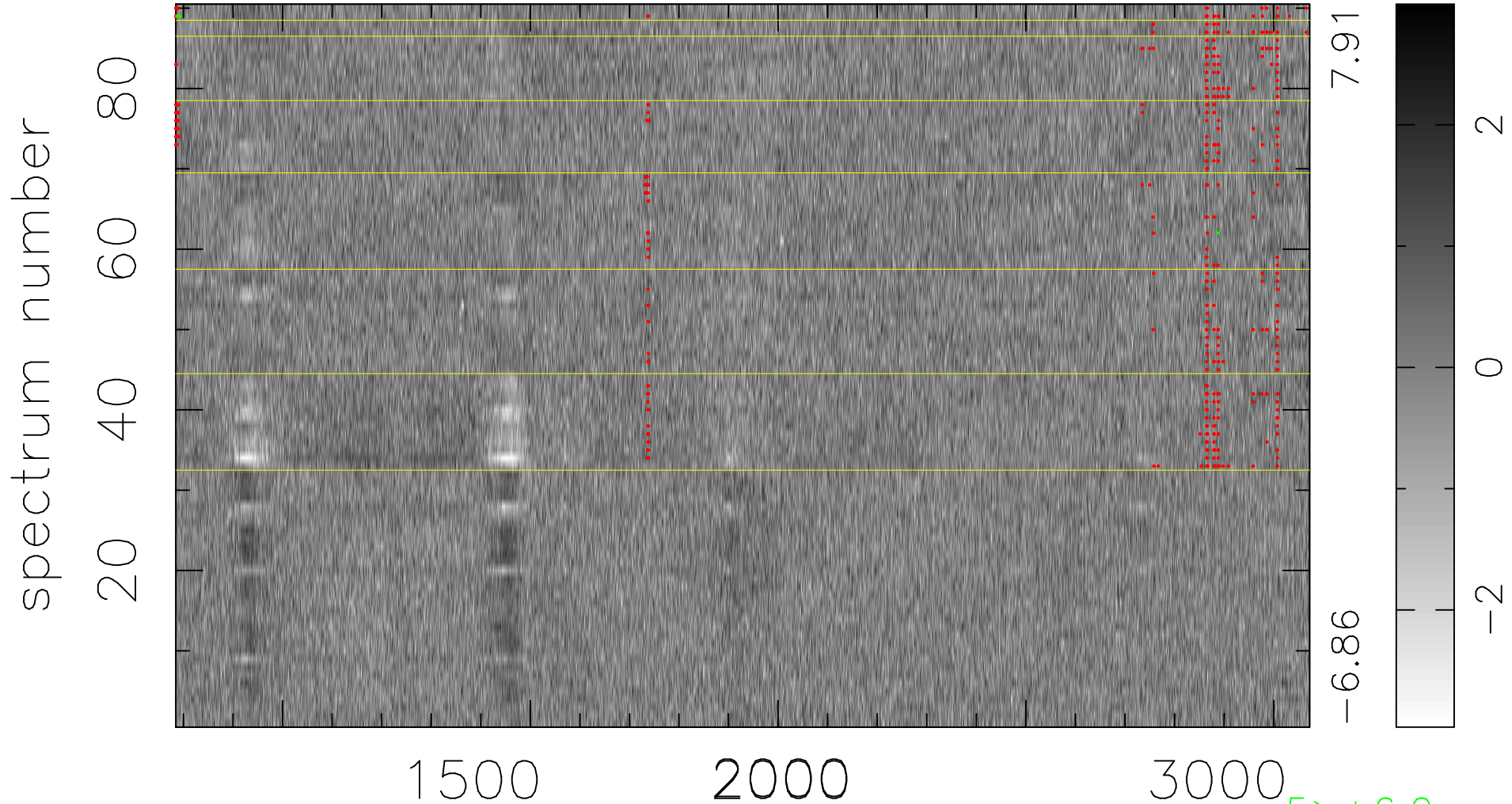


$$\chi(\lambda,t) = ( \text{Data} - \text{Model } AC_5 ) / \sigma \chi$$

$$\chi^2 / (411930 - 5254) = 0.982 \Rightarrow 1.007$$

4577x90



bad:476=0.12%

$\lambda$  (Å)  $z = 2.15490$

5 > +6.0 $\sigma$

3 < -6.0 $\sigma$