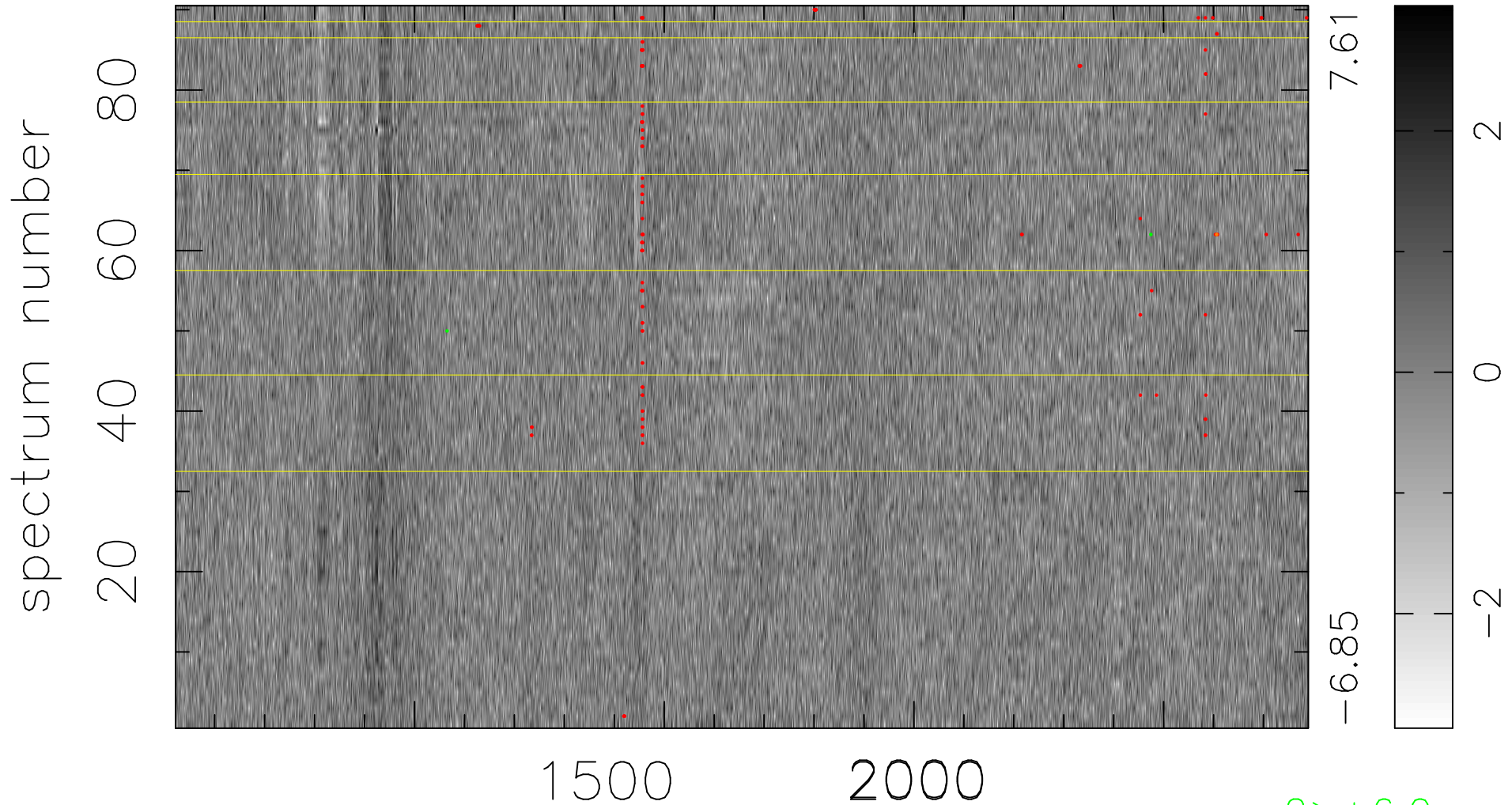


$$\chi(\lambda, t) = (\text{Data} - \text{Model } \text{AC}_5\text{B}_7\text{F}) / \sigma \chi$$

$$\chi^2 / (408330 - 5431) = 0.929 \Rightarrow 1.011$$

4537x90



bad:142=0.035% λ (Å) $z = 2.59147$

2 > +6.0 σ

1 < -6.0 σ