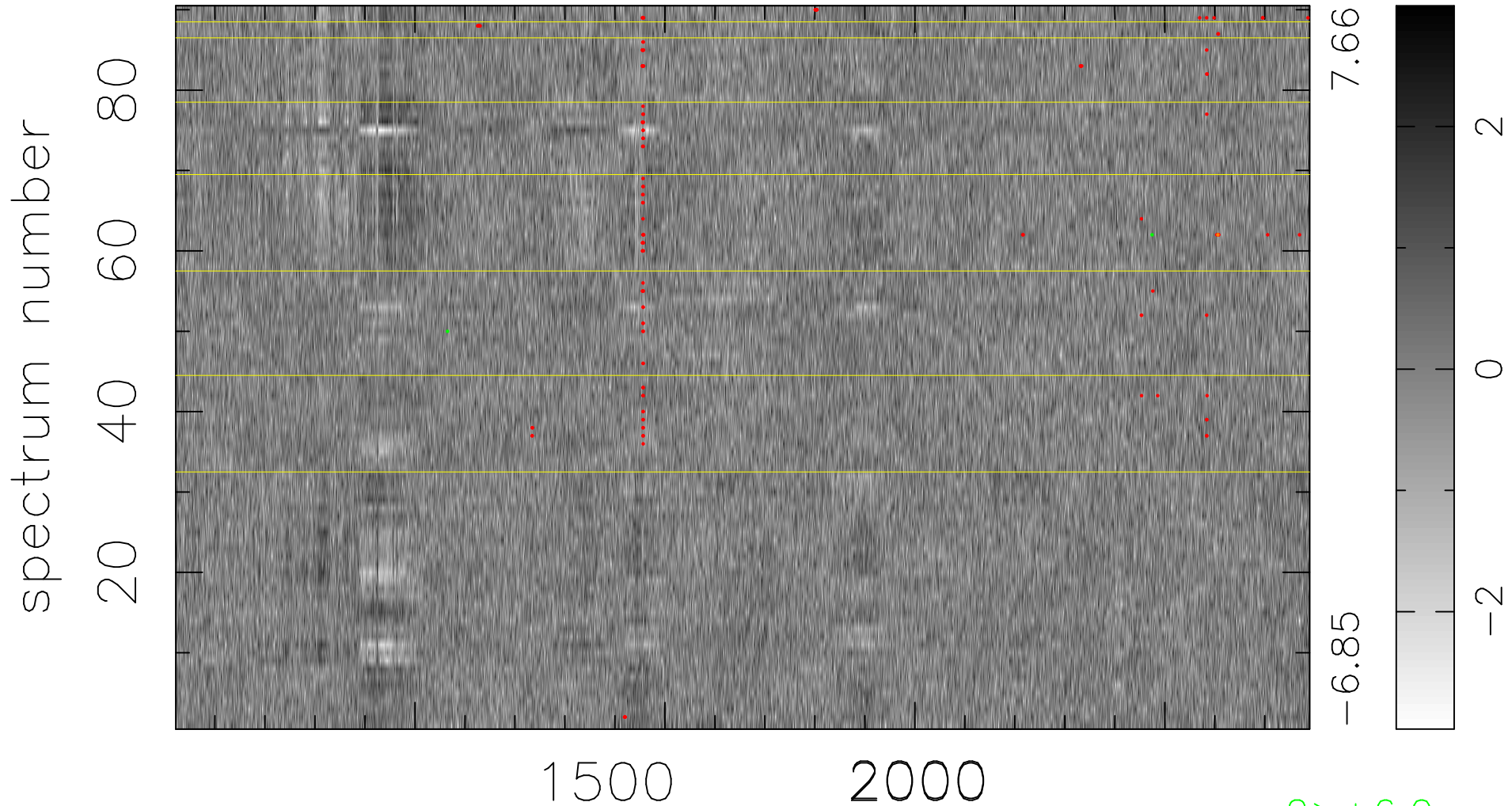


$$\chi(\lambda,t) = ( \text{Data} - \text{Model } AC_5 ) / \sigma \chi$$

$$\chi^2 / (408330 - 5201) = 0.953 \Rightarrow 1.007$$

4537x90



bad:142=0.035%  $\lambda$  (Å)  $z = 2.59147$

$2 > +6.0\sigma$   
 $1 < -6.0\sigma$