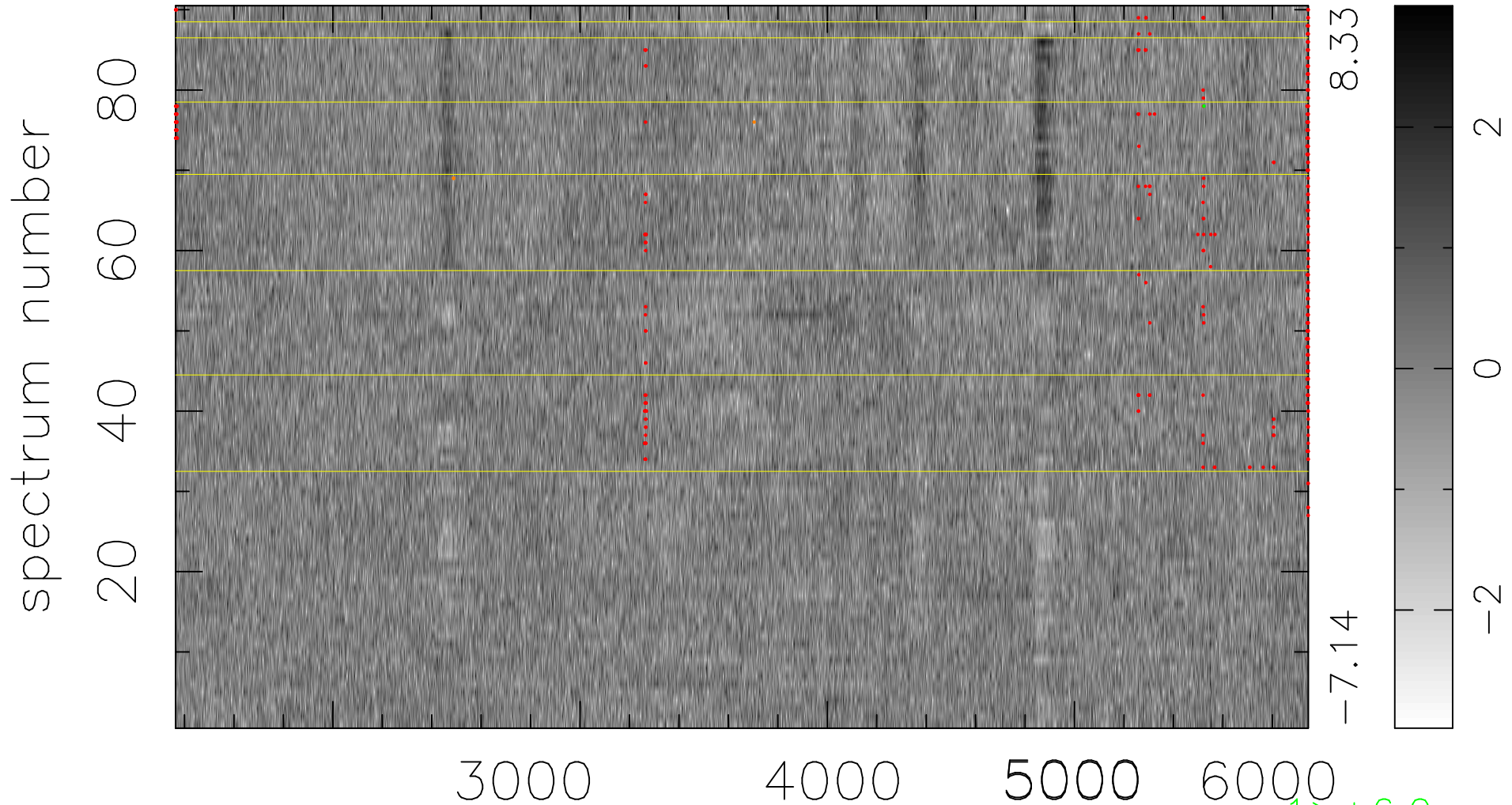


$$\chi(\lambda,t) = (\text{Data} - \text{Model } AC_5) / \sigma \chi$$

$$\chi^2 / (412380 - 4868) = 0.937 \Rightarrow 1.010$$

4582x90



bad:380=0.092% λ (Å) $z = 0.65949$

1 > +6.0 σ

3 < -6.0 σ