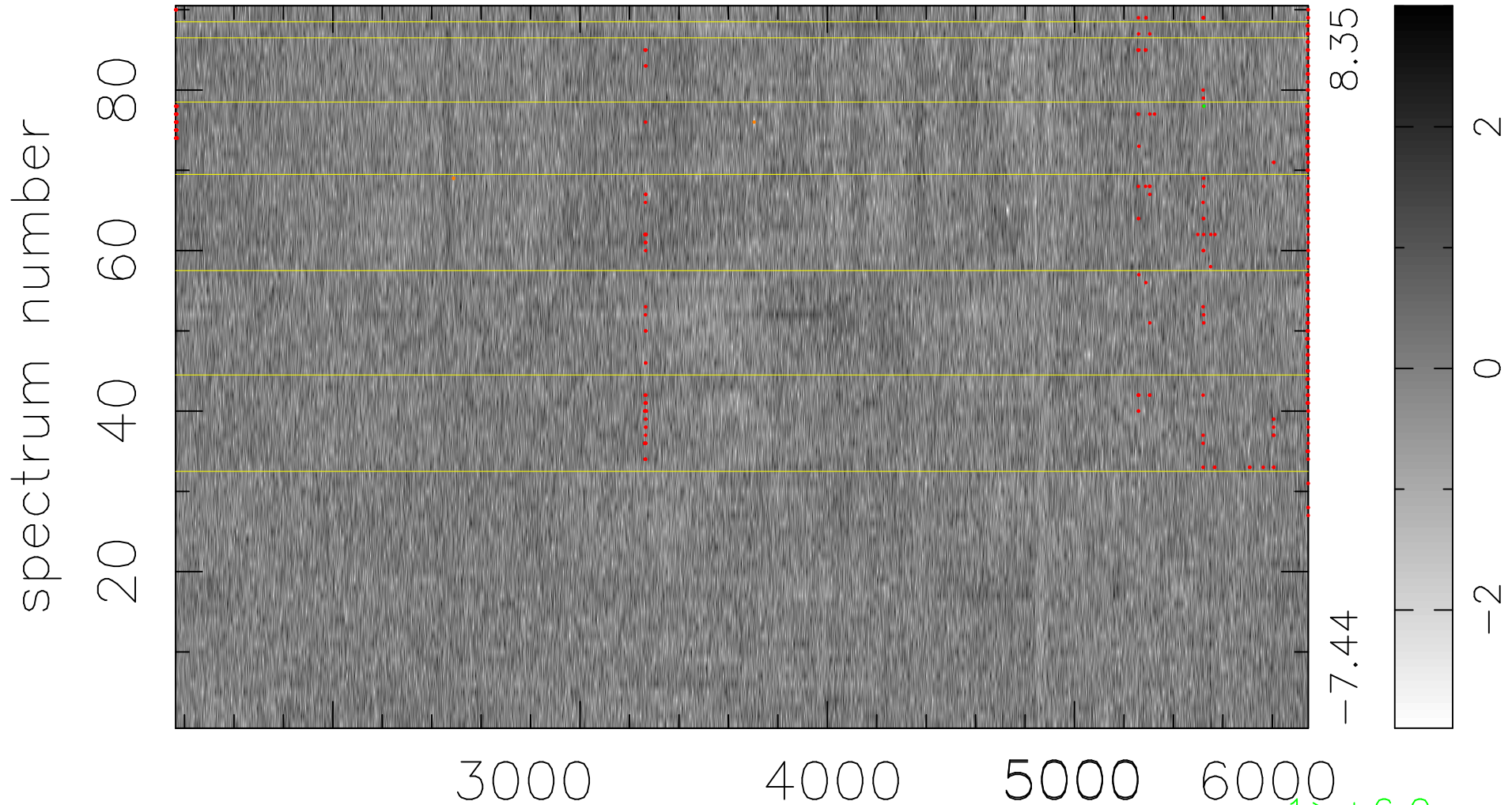


$$\chi(\lambda, t) = ( \text{Data} - \text{Model } \text{AC}_5\text{B}_3\text{F} ) / \sigma \chi$$

$$\chi^2 / (412380 - 5099) = 0.920 \Rightarrow 1.010$$

4582x90



bad:380=0.092%  $\lambda$  (Å)  $z = 0.65949$

1 > +6.0σ  
3 < -6.0σ