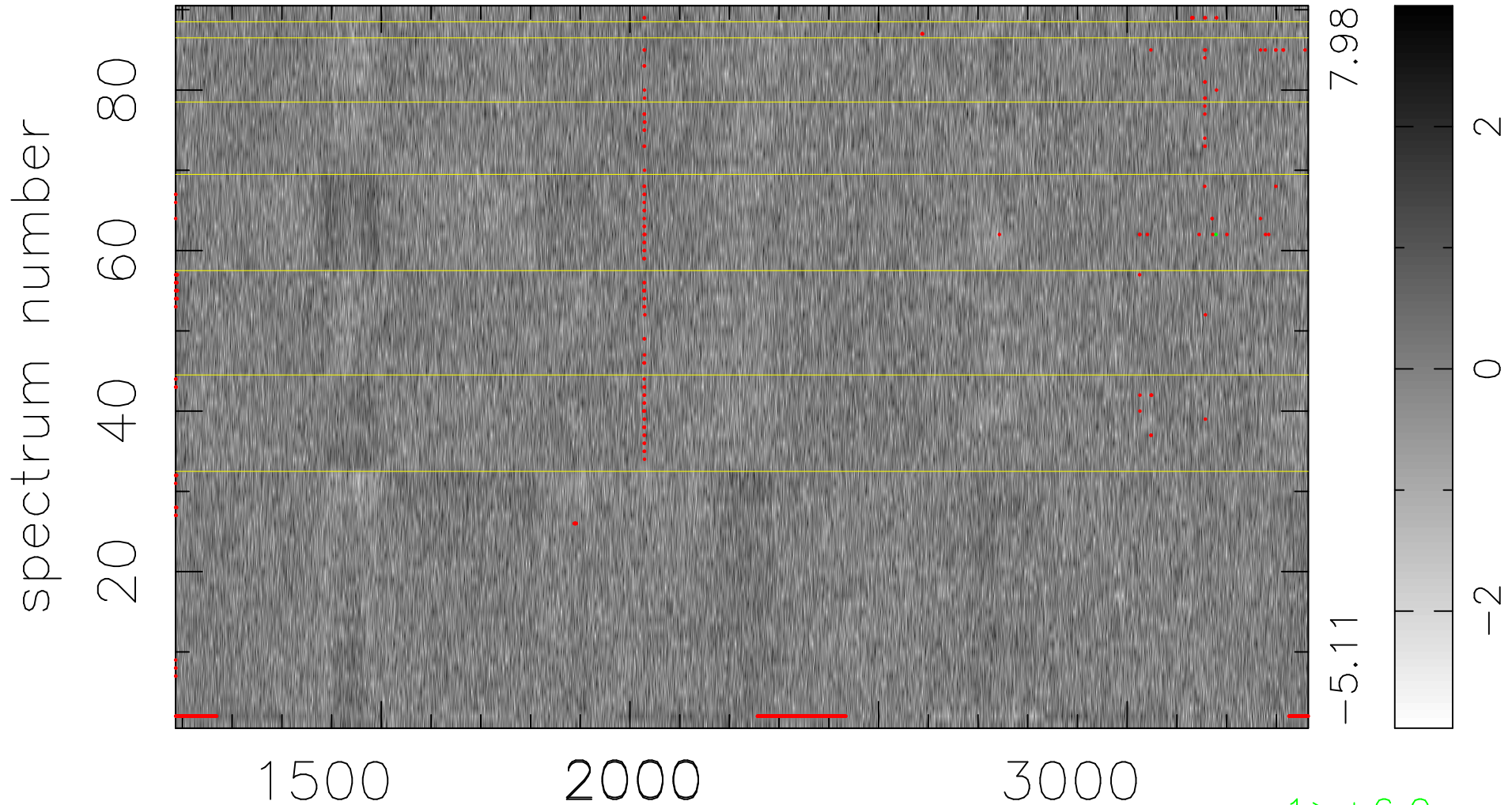


$$\chi(\lambda, t) = (\text{Data} - \text{Model AC}_5\text{F}) / \sigma \chi$$

$$\chi^2 / (410130 - 5116) = 0.892 \Rightarrow 1.007$$

4557x90



bad:806=0.20%

λ (Å) $z = 1.75904$

1 > +6.0 σ