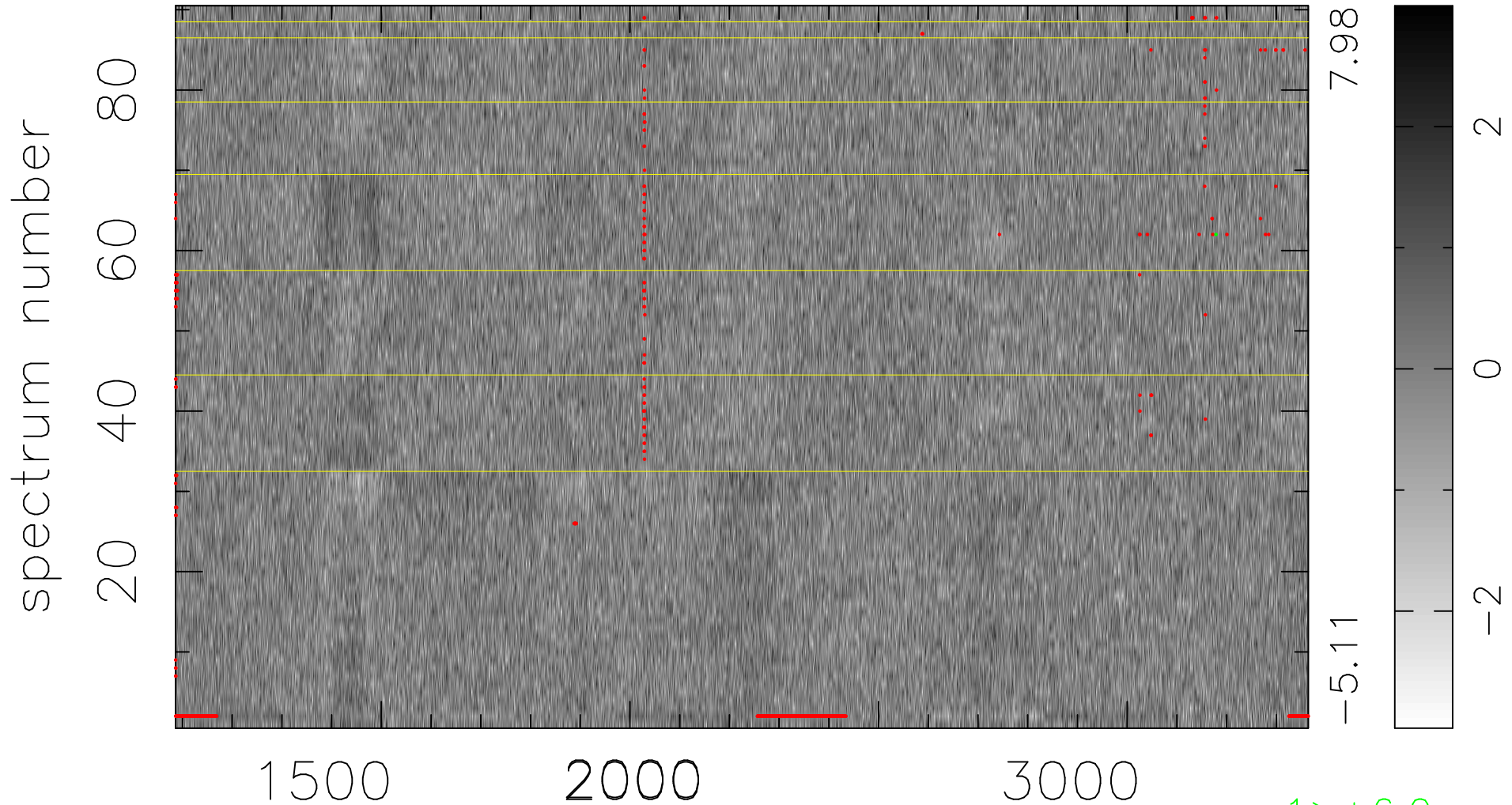


$$\chi(\lambda, t) = ( \text{Data} - \text{Model } AC_5 ) / \sigma \chi$$

$$\chi^2 / (410130 - 5026) = 0.892 \Rightarrow 1.007$$

4557x90



bad:806=0.20%

$\lambda$  (Å)  $z = 1.75904$

1 > +6.0 $\sigma$