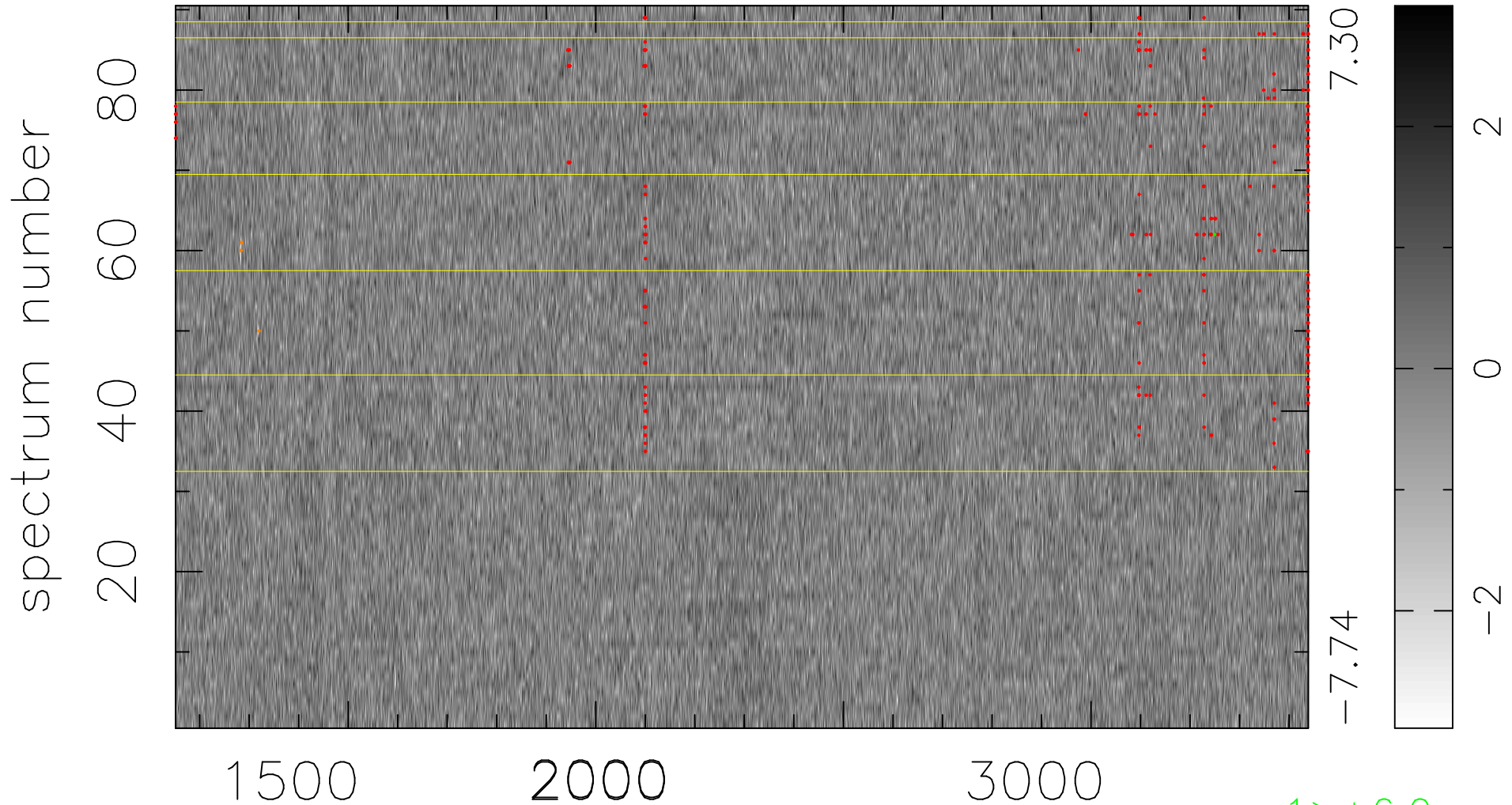


$$\chi(\lambda, t) = ( \text{Data} - \text{Model } \text{AC}_5\text{B}_5\text{F} ) / \sigma \chi$$

$$\chi^2 / (411750 - 5258) = 0.943 \Rightarrow 1.007$$

4575x90



bad:330=0.080%  $\lambda$  (Å)  $z = 1.67040$

1 > +6.0 $\sigma$

5 < -6.0 $\sigma$