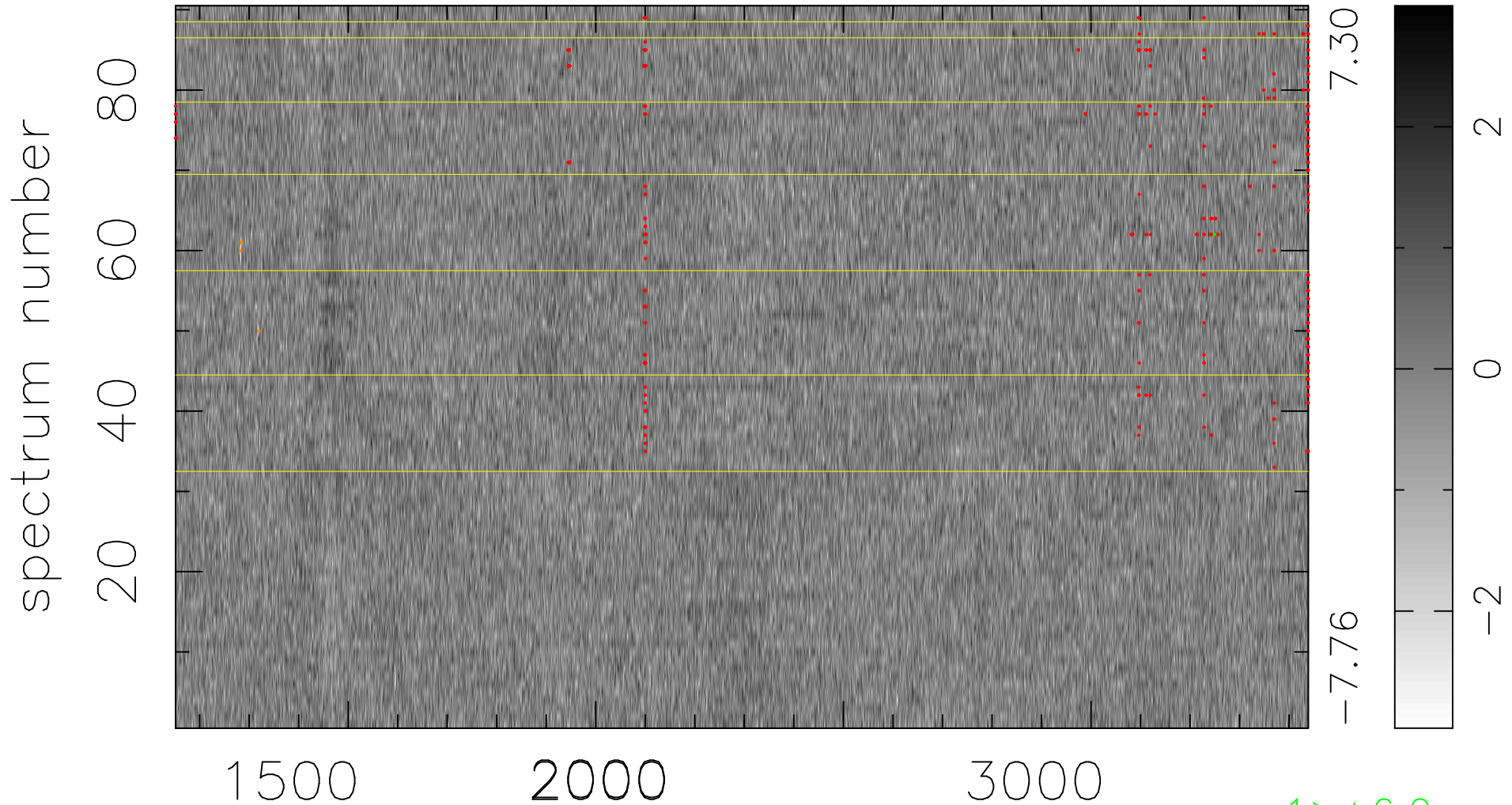


$$\chi(\lambda, t) = (\text{Data} - \text{Model AC}_5\text{F}) / \sigma \chi$$

$$\chi^2 / (411750 - 5134) = 0.947 \Rightarrow 1.007$$

4575x90



1 > +6.0σ

4 < -6.0σ

bad:330=0.080% λ (Å) z = 1.67040