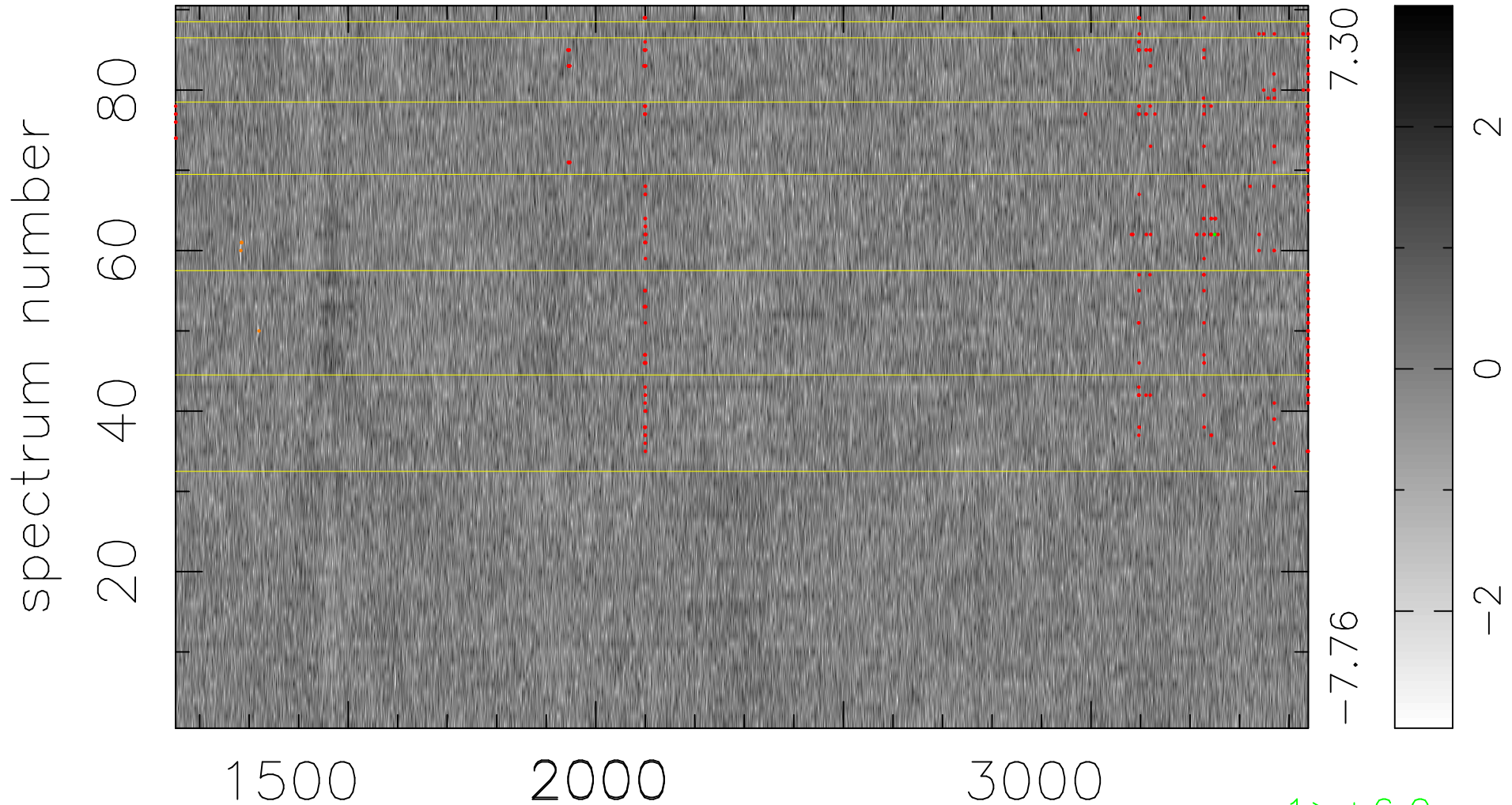


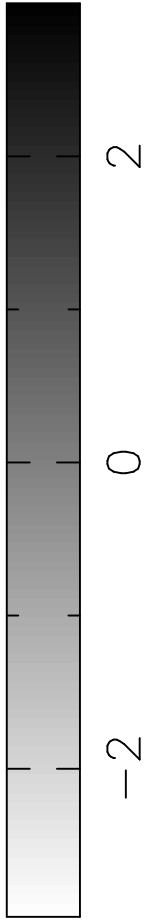
$$\chi(\lambda,t) = (\text{Data} - \text{Model } AC_5) / \sigma \chi$$

$$\chi^2 / (411750 - 5044) = 0.947 \Rightarrow 1.007$$

4575x90



7.30
-7.76



bad:330=0.080% λ (Å) $z = 1.67040$

1 > +6.0σ

4 < -6.0σ