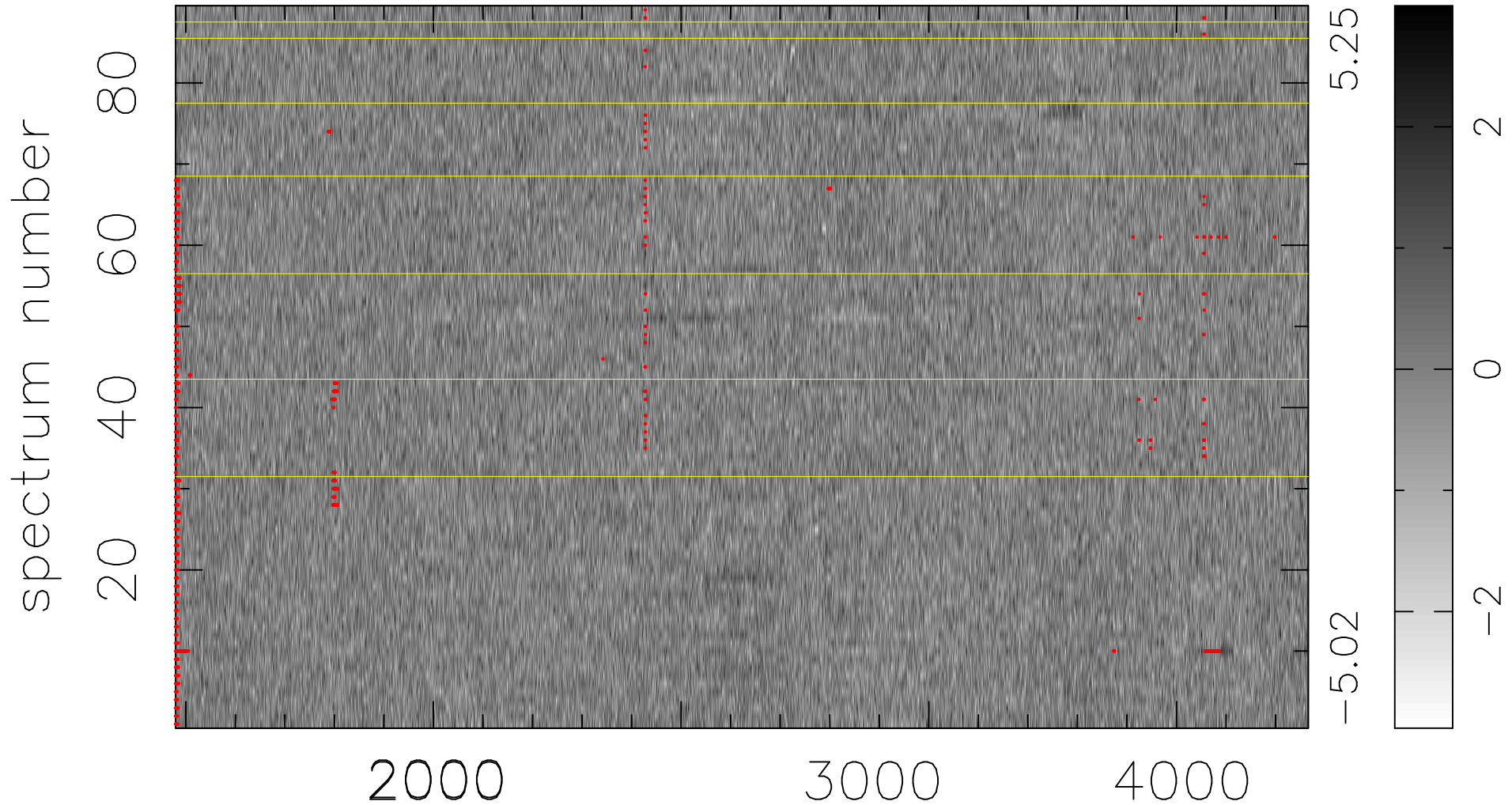


$$\chi(\lambda, t) = ( \text{Data} - \text{Model } \text{AC}_5\text{B}_3\text{F} ) / \sigma \chi$$

$$\chi^2 / (407086 - 5105) = 0.881 \Rightarrow 1.007$$

4574x89



bad:1002=0.25%  $\lambda$  (Å)  $z = 1.29612$