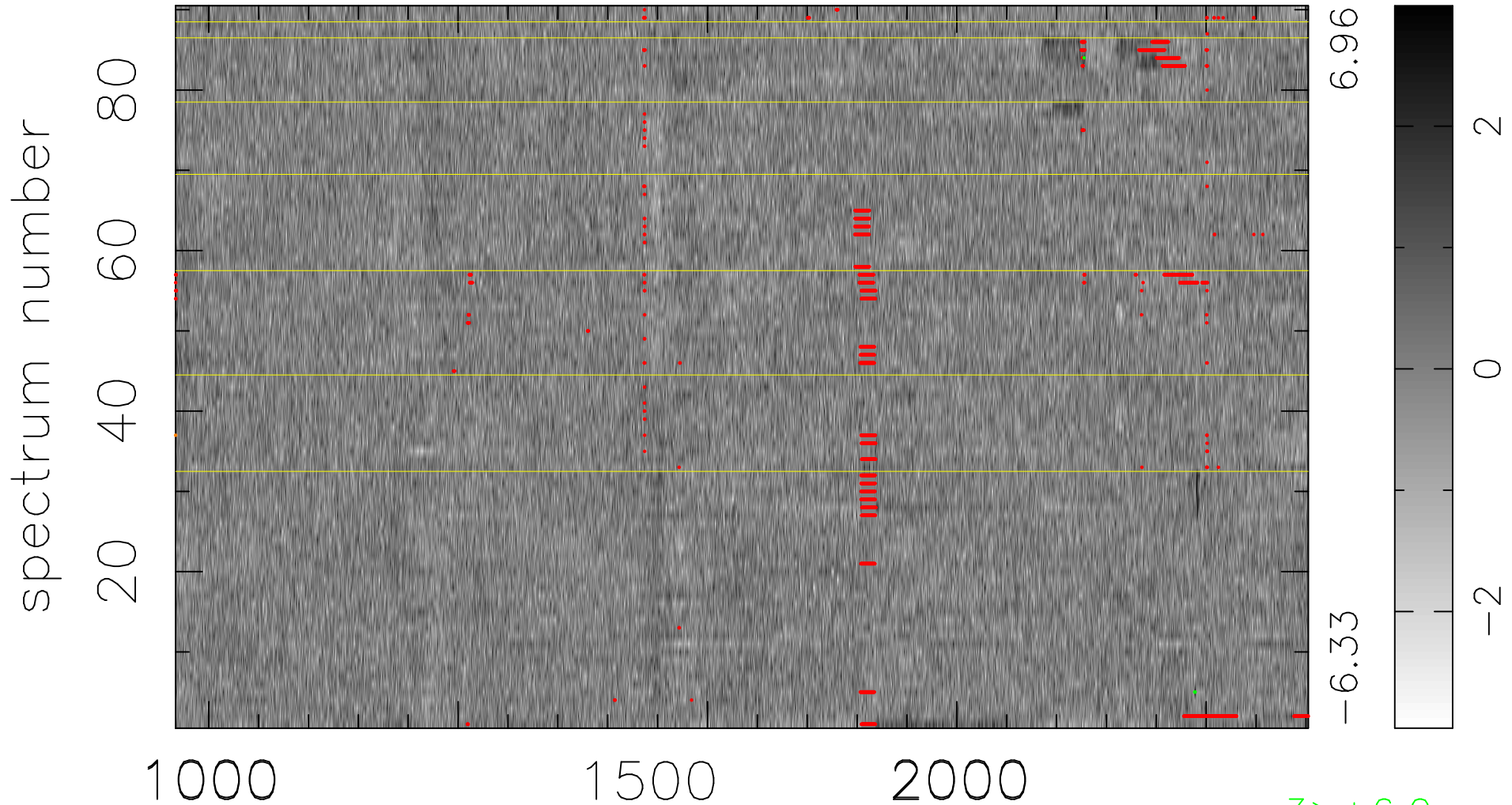


$$\chi(\lambda, t) = ( \text{Data} - \text{Model AC}_5\text{F} ) / \sigma \chi$$

$$\chi^2 / (408870 - 5210) = 0.911 \Rightarrow 1.007$$

4543x90



bad:2356=0.58%  $\lambda$  (Å)  $z = 2.73059$

3 > +6.0 $\sigma$

1 < -6.0 $\sigma$