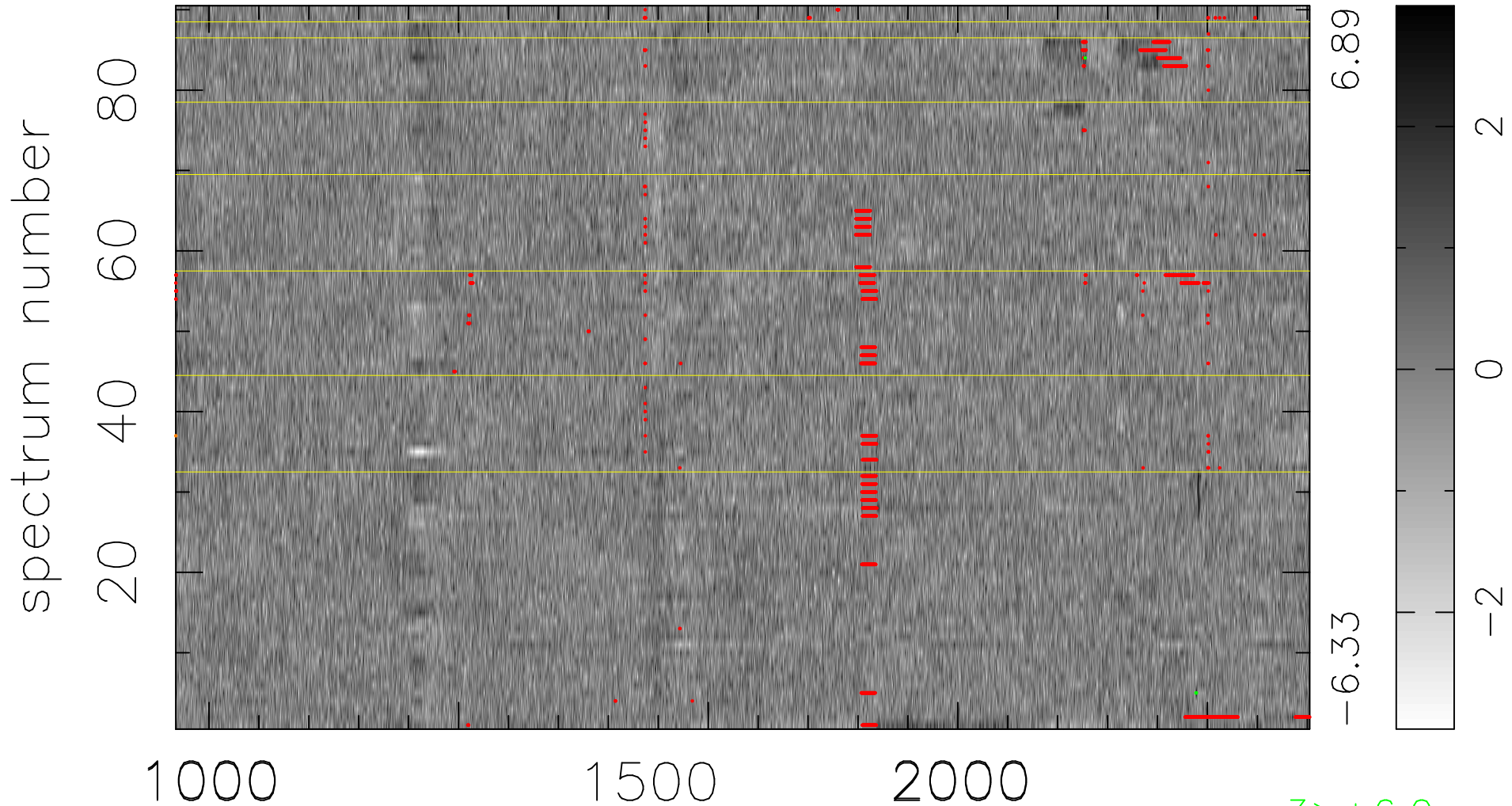


$$\chi(\lambda, t) = ( \text{Data} - \text{Model } AC_5 ) / \sigma \chi$$

$\chi^2 / (408870 - 5120) = 0.918 \Rightarrow 1.008$

4543x90



bad:2356=0.58%  $\lambda$  (Å)  $z = 2.73059$

3 > +6.0σ

1 < -6.0σ